



Firma

AUG. KRISTAL

TALLINN

asut. 1839 a.

Duuride  
õpetus  
Kõbarrele

N O O T I D E J A O T U S K I T A R I K A E I A I

re mi fa sol la si do re mi fa sol la si do re mi fa sol la

1  
2  
3  
4  
5  
6  
7

0 2 3 5 7  
0 2 1 5 7  
0 2 3 5 7  
0 2 3 5 7  
0 1 3 5 7  
0 2 1 5 7  
0 2 3 5 7

KUI noodi ees seisab siis tuleb noot wõtta  $\frac{1}{2}$  tooni kõrgem, näiteks noot sol wõetakse mine keel 5es jaotus aga sol 4es jaotus,

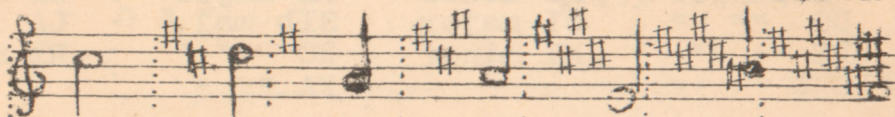
Kui noodi ees seisab siis tuleb noot wõtta  $\frac{1}{3}$  tooni madalam. näiteks noot sol wõetakse mine keel 5es jaotus aga sol 4es jaotus

## N O O T I D E N I M E T U S .

DO RE MI FA SOL LA SI  
C D E F G A H

## H J A B J Ä R J E S T U S .

DO RE SOL LA MI SI FA#  
MAJOR MAJOR MAJOR MAJOR MAJOR MAJOR MAJOR



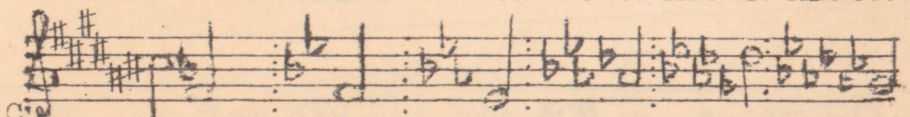
C dur D dur G dur A dur E dur H dur FIS dur

LA MI SI FA# DO# SOL# RE#  
MINOR MINOR MINOR MINOR MINOR MINOR MINOR



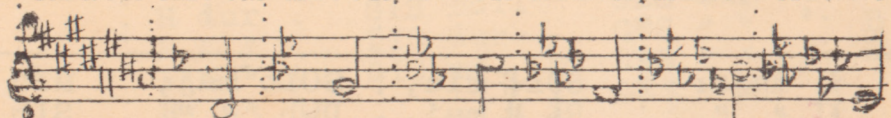
Amoll Emoll Hmoll FISmoll CIS GIS DISmoll

DO# FA SI b MI b LA b RE b SOL b  
MAJOR MAJOR MAJOR MAJOR MAJOR MAJOR MAJOR



CISdur F dur B dur E dur ASdur DESdur GFSdur

LA# RE SOL DO FA SI MI  
MINOR MINOR MINOR MINOR MINOR MINOR MINOR



AISmoll Dmol Gmoll Cmoll Fmoll Bmoll ESmoll

S A A T E Ü L E M I N E K U D Ü S E L T

T O C N I L T E İ S E L E

D ♯ major	LA minor	FA ♯ major	RE ♯ minor
FA " " "	MI major	SI major	Sib major
SOL " " "	LA minor	DO ♯ " " "	RE ♯ minor
DO " " "		FA ♯ " " "	

SOL major	MI minor	FA major	RE minor
DO " " "	SI major	Sib maj,	LA major
RE " " "	MI minor	DO " " "	RE minor
SOL " " "		FA " " "	

RE major	SI minor	Sib maj,	DO minor
SOL major	FA ♯ major	Mib " "	RE major
LA " " "	SI minor	FA " "	SOL min,
RE " "		Sib " "	

LA major	FA ♯ min,	Mib maj,	DO minor
RE " " "	DO ♯ maj,	LAB " "	SOL maj,
MI " " "	FA ♯ maj,	Sib " "	DO min,
LA " " "		MI " "	

MI major	DO ♯ min,	REb maj,	Sib min,
LA " " "	FA maj,	SOLb maj	FA maj,
SI " " "	DO ♯ min,	LAB " "	Sib min,
MI " " "		REb " "	

SI major	SOL ♯ min,	SOLb maj,	Mib min
LI " " "	RE ♯ maj,	Dob " "	Sib maj,
LA ♯ " " "	SOL ♯ min,	REb " "	Mib min,
SI " " "		SOLb " "	

S A A T E U L E M I N E K U D U H E L T

T O O N I L T T E I S E I E

C dur	A mol	FIS dur	
F " "	E dur	H " "	DIS mol
G " "	A mol	GIS " "	B dur
C " "		FIS " "	DIS mol

G dur	F mol	F dur	D mol
C " "	H dur	B dur	A dur
D " "	E mol	C " "	D mol
G " "		F " "	

D dur	H mol	B dur	G moll
G " "	FIS dur	ES dur	D dur
A " "	H mol	F " "	G moll
D " "		B " "	

A dur	FIS mol	ES dur	C moll
D " "	GIS dur	AS " "	G moll
E " "	FIS moll	B " "	C moll
A " "		ES " "	

E dur	GIS moll	DES dur	B moll
A " "	FIS dur	GES " "	F dur
H " "	GIS moll	AS " "	B moll
E " "		DES " "	

H dur	GIS moll	GES dur	ES moll
E " "	DIS dur	GES " "	B dur
FIS " "	GIS mol	DES " "	ES mol
H " "		GES " "	

DO major C dur	SEPT akk,	LA minor A moll	SEPT akk,
1 2na	3fa	2mi	2mi
2 1do	0si	1do	3re
3 0sol	0sol	2la	1sol#
4			2mi
5 0do			
6	0sol	2la	
7			

SOlnaj, G dur	SEPT akk,	MI minor E moll	SEPT akk,
1 5sol	4fa#	2mi	1re#
2 3re	1do	0si	0si
3 4si	2la	0sol	2la
4	0re		
5			0si
6 0sol			
7		2mi	

RE major D dur	SEPT akk,	SI minor H moll	SEPT akk,
4fa#	5sol	4fa#	4fa#
3re	5mi	3re	5mi
2la	0do	3si	3la
			4fa#
		0si	
0re	0la		

LA Major SEPT AKK. FA# Minor SEPT AKK.  
A Dur Fis Moll



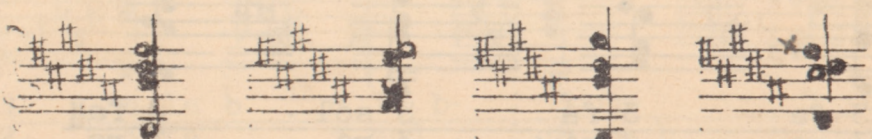
1	2 mi	2 mi	2 fa#	3 mi#
2	2 do#	3 re	2 do#	2 do#
3	2 la	1 sol#	2 la	4 si
4		2 mi		
5				2 do#
6	2 la			
7			4 fa#	

MI Major SEPT AKK. DO# Min, SEPT AKK.  
E DUR CIS Moll



1	2 mi	4 fa#	6 sol#	6 sol#
2	6 si	6 si	5 mi	7 fa#
3	1 sol#	2 la	6 do#	5 si#
4				6 sol#
5		6 si		
6			6 do#	
7	2 mi			

SI Major SEPT AKK. SOL# Min. SEPT AKK.  
H dur GIS Moll



1	4 fa#	4 fa#	6 sol#	5 fa#
2	4 re#	5 mi	4 re#	4 re#
3	4 si	3 la#	4 si	6 do#
4		4 fa#		
5	6 si			4 re#
6				
7			1 sol#	

FA# Major SEPT AKK. RE# Minor SEPT AKK.  
 FIS dur DIS Moll



1	4 fa#	3 mi	4 fa#	3 mi
2	2 do#	2 do#	4 re#	3 do
3	3 la#	4 si	3 la#	1 so#
4				
5		2 do#		
6				3 la#
7	4 fa		1 re#	

FA Major SEPT AKK. RE Minor SEPT AKK.  
 F dur D moll.



1	3 fa	mi	3 fa	2 mi
2	1 do	1 do	3 re	2 do#
3	2 la	3 si	2 la	0 sol
4				
5		1 do		
6				2 la
7	3 fa		0 re	

SiB Major SEPT AKK. SOL Minor SEPT AKK.  
 B Dur G Moll



1	3 fa	3 fa	5 sol	4 fa#
2	3 re	4 mi	3 re	3 re
3	3 si b	2 la	3 si b	5 do
4		3 fa		0 re
5				
6	3 si b		0 sol	



SI b Maj  
ES Dur

SEPT AKK.

DO Minor  
C moll

SEPT AKK



1	5 sol.	6 la b	5 sol	5 sol
2	4 mi b	3 re	4 mi b	6 fa
3	3 si b	3 si b	5 do	4 si
4				
5	4 mi b		5 sol	
6		3 re b		0 sol
7				

LA b Maj.  
AS dur

SEPT AKK.

FA Minor  
F Moll

SEPT AKK.



1	6 la b.	5 sol	3 fa	2 mi
2	4 mi b.	4 mi b.	1 do	1 do
3	5 do	6 re b.	1 la b.	3 si b
4				
5		4 mi b.		1 do
6				
7	6 la b		3 fa	

RE b Maj.  
DES dur

SEPT AKK.

SI b MIN.  
B moll

SEPT AKK.



1	6 la b	6 la b	3 fa	3 fa*
2	6 fa	7 sol	2 re b	4 mi b
3	6 re b	5 do	3 si b	2 la
4		6 la b.		3 fa
5				
6	6 re b		3 si b	
7				

SOL b MAJ. SEPT AKK. MI b MIN. SEPT AKK.  
 GES dor ES Moll

1	1 sol b	3 fa	1 sol b	3 fa
2	2 re b	2 re b	1 mi b	3 re
3	3 si b	4 do b	3 si b	1 la b
4			1 mi b	
5		2 re b		
6				3 si b
7	4 sol b			

MITTESUGUSED AKKORDID,  
 MISTULEWAD TIHTI ETTE  
 SAATE JURES

DO Major  
 c dur

1		5
2	1 do	5 mi
3	0 sol	5 do
4	2 mi	
5	1 do	
6		5 do
7		

SOL Major  
 G dur

0	RE	
0	si	1 do
0	sol	2 la
		4 fa#
0	sol	
		0 re

RE Major  
 D dur

1		
2	3 re	
3	2 la	2 la
4	4 fa#	4 fa#
5		3 re
6		
7	0 re	0 re

LA Major  
 A dur

2	mi	0 re
2	do#	0 si
2	la	1 sol#
2	mi	
2	la	
		2 mi

MI maj, Märkideta Sama nimilised Sama Nim Sam, nim  
E dur

0 si	6 sol#	0 re	6 sol#
1 sol	5 mi	3 sol#	5 mi
2 mi	1 si	4 sol#	4 si
	0 si		5 u.
2 mi		2 mi	

FA maj, Märk,  
FIS dur

FA maj, Märkideta MIb maj,

	1 do	5 sol	5 sol
2 la	2 la	5 mi	4 mi
3 fa	3 fa	3 sib	3 sib
2 do			1 mi b
3 la		5 do	
	3 fa		1 mi b

LAB maj, Märk,  
As dur

Re min, Märk,  
D moll

LA min, Märk, Sama  
A moll Nim,

1 do		1 do	8 la
1 la b	2 la	2 la	5 mi
1 mi b	3 fa	2 mi	5 dr
	3 re		7 la
1 la b		2 la	
	0 re		

MI minorMÄRK. SAMANIMEL. SI min, M ärk MÄRKID.  
ES moll H moll

1 re  
0 si 3 re 3 re  
2 la 4 si 4 si 4 si  
5 sol 0 si 4 fa 4 fa  
5 mi 4 la 4 la 4 la  
4 la 2 mi 4 la 4 la  
2 mi 4 la 4 la 4 la

### PAUSIDE TABEL

Terwe noot	$\frac{1}{2}$	$\frac{1}{4}$	$\frac{1}{8}$	$\frac{1}{16}$	$\frac{1}{32}$
T					
terwe paus	$\frac{1}{2}$	$\frac{1}{4}$	$\frac{1}{8}$	$\frac{1}{16}$	$\frac{1}{32}$

### PUNKTIDE TEHENDUS.

Punkt pärast nooti pikendahiimast  
 $\frac{1}{2}$  tema kestwusest  
Kirjutetakse

Mängitakse

MÄRKIDE JA ITAALIAKEEL SETE SÖNADE  
LÜHENDUS NGOTIDES

p	=	piano.....	tasa
pp	=	pianissimo.....	wäga tasa
F	=	forte.....	waljult
FF	=	fortissimo.....	wäga waljult
<i>de</i> cresc.	=	<del>de</del> crescendo.....	tugewust wahenda des
ad. lib.	=	ad libitum.....	wabal soowil
<i>cresc.</i>	=	<i>crescendo.....</i>	<i>tugerust lisades.</i>
LARGO.....			wäga aeglane
ADAJIO.....			aeglane
ANDANTE.....			weidi aeglasem kui adajio
MODERATO.....			parajalt
ALLEGRO.....			ruttu
PRESTO.....			wäga ruttu
VIVACE.....			nii ruttu kui wõimalik

10  
11  
12  
13  
14  
15

16  
17  
18  
19  
20  
21

22  
23  
24  
25  
26  
27

28  
29  
30  
31  
32  
33