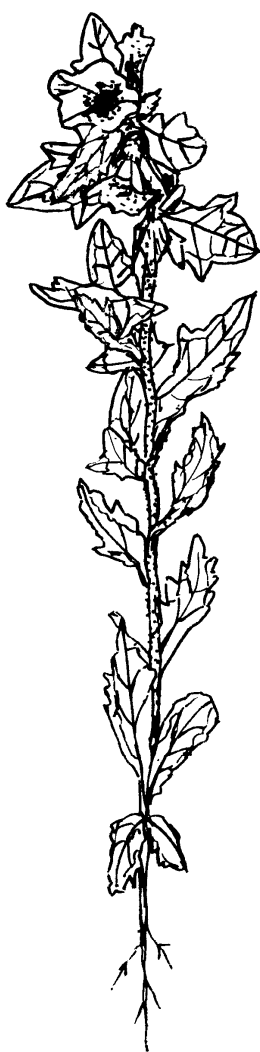


INDEX SEMINUM

Hyoscyamus niger L.



TALLINN 2009

TALLINNA BOTAANIKAAED

INDEX SEMINUM

anno 2007 et 2008 collectorum

quae

HORTUS BOTANICUS TALLINNENSIS

pro mutua commutatione offert

Tallinn 2009

Mandata inscribenda sunt:
Hortus Botanicus Tallinnensis
Kloostrimetsa tee 52
11913 Tallinn
Estonie

It is by the recipients of seeds to respect and to stand to international binding settlements of protection of endangered taxa and to uphold the interests of the nations of origin.
Es wird erwartet, dass die Empfänger von Saatgut international verbindliche Regelungen zum Schutz gefährdeter Sippen und zur Wahrung von Interessen der Herkunftsländer respektieren und einhalten.

Cover by: Olev Abner

ISSN 1406-3158
E-mail: index.seminum@tba.ee
<http://www.tba.ee>

I *Semina et sporae plantarum in horto botanico cultarum*

PTERIDOPHYTA

Adiantaceae

- + 1 *Adiantum caudatum* L. (Salaspils, 1986) 2008
- + 2 *Adiantum hispidulum* Sw. (Coimbra, 1990) 2007
- + 3 *Adiantum reniforme* L. (Tartu, 1993) 2008
- + 4 *Adiantum trapeziforme* L. (St. Petersburg, 1977) 2008
- + 5 *Pityrogramma calomelanos* (L.) Link 2008
- + 6 *Pityrogramma calomelanos* (L.) Link var. *aureo-flava* (Hook.) Weath. ex L.H.Bailey 2008

Blechnaceae

- + 7 *Stenochlaena tenuifolia* (Desv.) T.Moore 2007
- + 8 *Woodwardia radicans* (L.) Sm. (St. Petersburg, 1977) 2007

Davalliaceae

- + 9 *Davallia pyxidata* Cav. (St. Petersburg, 1982) 2008

Polypodiaceae

- + 10 *Microsorium punctatum* (L.) Copel. 2008
- + 11 *Phlebodium aureum* (L.) J.Sm. 2008

SPERMATOPHYTA

GYMNOSPERMAE

Cupressaceae

- 12 *Juniperus squamata* Buch.-Ham. ex D.Don cv. *Meyeri* (Moscow, 1961) 2008
- * 13 *Microbiota decussata* Kom. (*Rossia extremiorientalis*, *Okeanskaya*, 1961) 2008
- 14 *Thuja koraiensis* Nakai (Tartu, 1982) 2007
- 15 *Thuja occidentalis* L. 2008
- 16 *Thuja plicata* Donn ex D.Don (Estonia, Kuusnõmme, 1961) 2007

Pinaceae

- 17 *Abies koreana* E.H.Wilson (Nogent-sur-Vernisson, 1966) 2007
- 18 *Abies koreana* E.H.Wilson cv. *Horstmann's Silberlocke* (Salaspils, 1992) 2007
- 19 *Larix decidua* Mill. (Rogów, 1965) 2007
- 20 *Larix decidua* Mill. var. *polonica* (Racib. ex Wóycicki) Ostenf. et Syrach (Rogów, 1968) 2007
- 21 *Larix gmelinii* (Rupr.) Kuzen. var. *principis-rupprechtii* (Mayr) Pilg. (Beijing, 1975) 2007
- 22 *Larix kaempferi* (Lamb.) Carrière (Koshigaya, 1983) 2007
- 23 *Larix sibirica* Ledeb. (Estonia, Järvelja, 1958) 2008

+ = *semina et sporae plantarum in calidariis cultarum*

* = Seeds of a cultivated plant of known wild origin / Samen von kultivierte Pflanzen bekannter Wildherkunft

A = Seeds of a cultivated plant from Audaku Experimental Station (Saaremaa Island, 58°17'52" N 022°06'08" E) / Samen von kultivierte Pflanzen von wissenschaftlicher Beobachtungsstelle Audaku (Insel Ösel, 58°17'52" N 022°06'08" O)

- 24 *Picea glauca* (Moench) Voss 2007
 25 *Picea glauca* (Moench) Voss var. *albertiana* (S.Br.) Sarg. 2007
 * 26 *Picea glehnii* (F.Schmidt) Mast. (*Insulae Kurilenses*, *Kunashiri*, 1982) 2007
 * 27 *Picea jezoensis* (Siebold et Zucc.) Carrière (*Insula Sachalin*,
Korsakov, 1961) 2007
 28 *Picea koraiensis* Nakai (Pyongyang, 1976) 2007
 29 *Picea koyamai* Shiras. (Tartu, 1982) 2007
 * 30 *Picea mariana* (Mill.) Britton, Stearn et Poggenb. (Ottawa, 1968) 2007
 31 *Picea omorika* (Pancic) Purk. 2007
 32 *Picea pungens* Engelm. cv. *Glauca* 2007
 33 *Picea rubens* Sarg. (Lithuania, Girionys, 1977) 2007
 34 *Picea sitchensis* (Bong.) Carrière (Lithuania, Girionys, 1977) 2007
 35 *Pinus contorta* Douglas ex Loudon var. *latifolia* Engelm. ex
 S.Watson (Lithuania, Girionys, 1977) 2007
 36 *Pinus mugo* Turra ssp. *pumilio* (Haenke) Franco (Hungaria, 1990) 2007
 * 37 *Pinus uncinata* Ramond ex DC. (Liège, 1982) 2007
 38 *Tsuga diversifolia* (Maxim.) Mast (Estonia, Järvelja, 1989) 2007

ANGIOSPERMAE

Dicotyledoneae

Acanthaceae

- + 39 *Barleria prionitis* L. (Villers-lès-Nancy, 2003) 2008
 + 40 *Crossandra nilotica* Oliv. 2008

Aceraceae

- 41 *Acer barbinerve* Maxim. 2008
 42 *Acer campestre* L. 2008
 * 43 *Acer caudatum* Wall. ex Rehder ssp. *ukurunduense* (Trautv. et C.A.Mey.)
 E.Murray (*Insula Sachalin*, *Mt. Chekhov*, 1961) 2007
 44 *Acer glabrum* Torr. 2007
 * 45 *Acer mandshuricum* Maxim. (*Rossia extremiorientalis*, *Lazo*, 1977) 2008
 * 46 *Acer mandshuricum* Maxim. (*Rossia extremiorientalis*,
Okeanskaya, 1961) 2007
 * 47 *Acer mono* Maxim. (*Insula Sachalin*, *Yuzhno-Sakhalinsk*, 1961) 2007
 48 *Acer negundo* L. 2008
 * 49 *Acer negundo* L. var. *interius* (Britton) Sarg. (Edmonton, 1967) 2008
 50 *Acer pseudoplatanus* L. 2007
 51 *Acer pseudoplatanus* L. f. *purpureum* (Loudon) Rehder 2007
 * 52 *Acer pseudosieboldianum* (Pax) Kom. (*Rossia extremiorientalis*,
Lazo, 1977) 2008
 53 *Acer spicatum* Lam. 2007
 54 *Acer tataricum* L. 2007
 * 55 *Acer tataricum* L. ssp. *ginnala* (Maxim.) Wesm. (*Rossia extremiorientalis*,
Okeanskaya, 1961) 2008
 56 *Acer tegmentosum* Maxim. 2007

Actinidiaceae

- 57 *Actinidia kolomikta* (Rupr. et Maxim.) Maxim. 2008

Aizoaceae

- + 58 *Aptenia cordifolia* (L.f.) N.E.Br. (Kiel, 1999) 2008

Anacardiaceae

- 59 *Cotinus coggygria* Scop. 2008
 60 *Rhus radicans* L. var. *rydbergii* (Small) Rehder 2007
 61 *Rhus typhina* L. 2007
 62 *Rhus typhina* L. (Estonia, Kuressaare, 1977) 2008

Apiaceae

- 63 *Astrantia carniolica* Wulfen (Edmonton, 1993) 2008
 64 *Eryngium giganteum* M.Bieb. (Ljubljana, 1982) 2008
 65 *Falcaria vulgaris* Bernh. 2008
 66 *Laser trilobum* (L.) Borkh. (Moscow, 1982) 2008
 67 *Ligusticum mutellina* (L.) Crantz (Århus, 2000) 2008
 68 *Meum athamanticum* Jacq. (Moscow, 1982) 2007
 * 69 *Pimpinella major* (L.) Huds. (*Estonia, Laelatu*, 2000) 2008

Apocynaceae

- 70 *Rhazya orientalis* (Decne.) DC. (Giessen, 1991) 2007

Aquifoliaceae

- 71 *Ilex laevigata* (Pursh) A.Gray (Holland, 1993) 2008
 72 *Ilex verticillata* (L.) A.Gray (Mentor, 1994) 2008

Araliaceae

- * 73 *Aralia cordata* Thunb. (*Insulae Kurilenses, Kunashiri*, 1981) 2008
 * 74 *Eleutherococcus senticosus* (Rupr. et Maxim.) Maxim. (*Insula Sachalin, Dolinsk*, 1962) 2008
 * 75 *Eleutherococcus sessiliflorus* (Rupr. et Maxim.) S.Y.Hu (*Rossia extremiorientalis, Artem*, 1961) 2007
 * 76 *Oplopanax horridus* (Sm.) Miq. (Seattle, 1978) 2008

Asclepiadaceae

- 77 *Asclepias syriaca* L. (Linz, 1978) 2007
 + 78 *Stephanotis floribunda* (R.Br.) Brongn. 2008

Asteraceae

- * 79 *Achillea biserrata* M.Bieb. (*Caucasus borealis, Goryachy Klyuch*, 1990) 2008
 * 80 *Achillea filipendulina* Lam. (München, 2005) 2008
 81 *Adenostyles alliariae* (Gouan) A.Kern (Graz, 1967) 2007
 82 *Arnica angustifolia* Vahl ssp. *tomentosa* (Macoun) G.W.Douglas et Ruyle-Dougl. (Göteborg, 2003) 2008
 83 *Arnica chamissonis* Less. (Halle, 1989) 2007
 * 84 *Artemisia rupestris* L. (*Estonia, Insula Muhu, Üügu*, 2000) 2007
 85 *Aster alpinus* L. cv. *Albus* (Linz, 1997) 2008
 86 *Aster alpinus* L. cv. *Roseus* (Oslo, 1996) 2008
 * 87 *Aster amellus* L. (Zürich, 2002) 2008
 88 *Aster amellus* L. ssp. *ibericus* (M.Bieb.) V.E.Avet. (Szeged, 1987) 2008
 89 *Aster amellus* L. cv. *Rudolph Goethe* (Mühlhausen, 1983) 2008
 90 *Aster macrophyllus* L. (Riga, 1988) 2008
 91 *Aster ptarmicoides* (Nees) Torr. et A.Gray 2007
 92 *Cacalia hastata* L. (Tartu, 1998) 2008

- 93 *Centaurea polyphylla* Ledeb. ex Nordm. (Poznań, 2005) 2008
 94 *Centaurea ruthenica* Lam. (München, 2003) 2008
 95 *Coreopsis basalis* (Otto et A. Dietr.) S.F.Blake 2007
 96 *Cosmos sulphureus* Cav. cv. Polidur 2007
 * 97 *Eupatorium maculatum* L. (Liège, 1996) 2008
 98 *Eupatorium perfoliatum* L. (Ulm, 2000) 2008
 99 *Heterotheca villosa* (Pursh) Shinnars (Riga, 1991) 2007
 100 *Hieracium aurantiacum* L. (Kirovsk, 1986) 2008
 * 101 *Hieracium intybaceum* All. (Salzburg, 2004) 2008
 * 102 *Hypochaeris uniflora* Vill. (Salzburg, 2004) 2007
 103 *Inula oculus-christi* L. (Jena, 2005) 2008
 104 *Ligularia hodgsonii* Hook. (Hokkaido, 2003) 2008
 105 *Melampodium paludosum* Humb., Bonpl. et Kunth (Zürich, 2007) 2007
 106 *Rudbeckia occidentalis* Nutt. (Leipzig, 2005) 2007
 107 *Saussurea riederi* Herder (Marburg, 2005) 2008
 108 *Senecio adonidifolius* Loisel. (Heidelberg, 1975) 2008
 109 *Senecio cannabifolius* Less. 2008
 110 *Senecio doria* L. 2008
 111 *Senecio ovatus* (Gottfr. Gaertn., B.Mey. et Scherb.) Willd.
 (Oldenburg, 1994) 2008
 * 112 *Serratula tinctoria* L. (*Estonia, Laelatu*, 2000) 2008
 * 113 *Silphium integrifolium* Michx. (Glencoe, 1993) 2007
 114 *Sinacalia tangutica* (Maxim.) B.Nord (Tartu, 2004) 2008
 * 115 *Solidago patagonica* Phil. (Göttingen, 2005) 2008
 116 *Solidago speciosa* Nutt. (East Lansing, 2000) 2007
 117 *Solidago virgaurea* L. ssp. *minuta* (L.) Arcang. (Chambésy, 1988) 2008
 118 *Tanacetum coccineum* (Willd.) Grierson (Kirovsk, 1981) 2008
 119 *Tanacetum macrophyllum* (Waldst. et Kit.) Sch. Bip. (Moscow, 1982) 2007
 120 *Telekia speciosa* (Schreb.) Baumg. 2008

Begoniaceae

- + 121 *Begonia venosa* Skan ex Hook.f. (Lyon, 1999) 2007

Berberidaceae

- 122 *Berberis aggregata* C.K.Schneid. (Stockholm, 1957) 2008
 123 *Berberis amurensis* Rupr. var. *japonica* (Regel) Rehder 2007
 124 *Berberis buxifolia* Lam. ex Poir. (Hørsholm, 1994) 2008
 125 *Berberis heterophylla* Juss. (Hørsholm, 1994) 2008
 126 *Berberis koreana* Palib. (Hørsholm, 1991) 2008
 127 *Berberis parvifolia* Sprague (Berlin-Dahlem, 1957) 2008
 128 *Berberis thunbergii* DC. 2007
 129 *Berberis thunbergii* DC. cv. *Erecta* (Ottawa, 1960) 2008

- 130 *Berberis thunbergii* DC. var. *maximowiczii* (Regel) Regel
(Moscow, 1998) 2007
- 131 *Berberis thunbergii* DC. cv. Silver Beauty (Moscow, 1961) 2008
- 132 *Berberis vulgaris* L. cv. *Atropurpurea* 2007
- 133 *Podophyllum hexandrum* Royle (Bergen, 1958) 2008
- 134 *Podophyllum hexandrum* Royle var. *chinense* (Sprague)
Stearn ex Cubey 2008

Betulaceae

- * 135 *Alnus crispa* (Aiton) Pursh (Vancouver, 1981) 2008
- * 136 *Alnus fruticosa* Rupr. (*Rossia extremorientalis*, Zeya, 1975) 2008
- * 137 *Alnus hirsuta* (Spach) Rupr. (*Rossia extremorientalis*,
Okeanskaya, 1961) 2008
- 138 *Alnus incana* (L.) Moench f. *laciniata* Loudon 2007
- 139 *Alnus japonica* (Thunb.) Steud. (Nayoro, 1973) 2008
- * 140 *Alnus maximowiczii* Callier (*Insulae Kurilenses*, *Kunashiri*, 1981) 2008
- * 141 *Alnus sinuata* (Regel) Rydb. (Vancouver, 1977) 2008
- 142 *Alnus viridis* (Chaix) DC. (Rogów, 1973) 2008
- 143 *Betula albosinensis* Burkill var. *septentrionalis* C.K.Schneid.
(Berlin-Dahlem, 1974) 2007
- 144 *Betula alleghaniensis* Britton 2008
- 145 *Betula x aurata* Borkh. 2007
- 146 *Betula davurica* Pall. 2007
- * 147 *Betula ermanii* Cham. (*Insulae Kurilenses*, *Kunashiri*, 1981) 2008
- 148 *Betula ermanii* Cham. 2007
- 149 *Betula ermanii* Cham. var. *subcordata* (Regel) Koidz. (Nikko, 1975) 2007
- * 150 *Betula fruticosa* Pall. (*Rossia extremorientalis*, *Olga*, 1977) 2007
- * 151 *Betula glandulifera* (Regel) B.T.Butler (Montréal, 1991) 2008
- 152 *Betula humilis* Schrank 2008
- * 153 *Betula humilis* Schrank (Latvia, Laidi, 1977) 2007
- 154 *Betula lenta* L. (Rogów, 1975) 2008
- 155 *Betula papyrifera* Marshall (Estonia, Järvselja, 1958) 2007
- * 156 *Betula pendula* Roth var. *carelica* (Mercklin) Hämet-Ahti
(Finlandia, 1959) 2007
- 157 *Betula pendula* Roth var. *oycoviensis* (Besser) Dippel (Lublin, 1974) 2008
- * 158 *Betula platyphylla* Sukaczew (*Rossia extremorientalis*,
Okeanskaya, 1961) 2007
- * 159 *Betula platyphylla* Sukaczew var. *japonica* (Miq.) Hara (*Insula Sachalin*,
Novoalexandrovsk, 1961) 2007
- * 160 *Betula populifolia* Marshall (Millbrook, 1973) 2007
- 161 *Carpinus betulus* L. (Kaunas, 1965) 2007
- 162 *Carpinus betulus* L. cv. *Incisa* (København, 1965) 2008
- * 163 *Carpinus caroliniana* Walter (Ottawa, 1967) 2008
- * 164 *Carpinus cordata* Blume (*Rossia extremorientalis*, *Okeanskaya*, 1977) 2008

Bignoniaceae

- + 165 *Tecoma garrocha* Hieron. (Tenerife, 2007) 2008

Boraginaceae

- 166 *Anchusa azurea* Mill. (Amsterdam, 1993) 2007
 167 *Cerintho major* L. cv. *Purpurascens* 2007
 168 *Echium russicum* J.F.Gmel. (Stockholm, 1993) 2007

Brassicaceae

- 169 *Aurinia saxatilis* (L.) Desv. cv. *Citrina* (Ferrara, 1997) 2008

Calycanthaceae

- 170 *Calycanthus fertilis* Walter var. *laevigatus* (Willd.) Bean
 (Nogent-sur-Vernisson, 1964) 2007

Campanulaceae

- 171 *Campanula allariifolia* Willd. (Göttingen, 2000) 2008
 172 *Campanula carpatica* Jacq. 2008
 * 173 *Campanula grossheimii* Kharadze (Reykjavik, 2006) 2008
 174 *Campanula kemulariae* Fomin (Bratislava, 1990) 2008
 * 175 *Codonopsis lanceolata* (Siebold et Zucc.) Trautv. (Vladivostok, 2006) 2008
 176 *Edraianthus tenuifolius* (Waldst. et Kit.) A. DC. (AGS, 2005) 2008
 177 *Phyteuma nigrum* F.W.Schmidt (München, 1991) 2008
 178 *Symphandra pendula* (M.Bieb.) A.DC. (Trondheim, 1987) 2008

Capparaceae

- 179 *Polanisia dodecandra* (L.)DC. (Marburg, 2007) 2007

Caprifoliaceae

- * 180 *Diervilla lonicera* Mill. (Ottawa, 1966) 2008
 181 *Diervilla rivularis* Gatt. (Dushanbe, 1957) 2008
 182 *Diervilla sessilifolia* Buckland (Leiden, 1957) 2007
 183 *Kolkwitzia amabilis* Graebn. 2008
 184 *Lonicera albertii* Regel (Khorog, 1985) 2007
 185 *Lonicera alpigena* L. 2008
 186 *Lonicera altmannii* Regel et Schmalh. (Kiev, 1958) 2007
 * 187 *Lonicera caerulea* L. (Chambésy, 1979) 2008
 188 *Lonicera caerulea* L. var. *altaica* (Pall. ex DC.) Sweet (Barnaul, 1965) 2007
 * 189 *Lonicera caerulea* L. var. *edulis* Regel (*Peninsula Kamchatka*,
Severnye Koryaki, 1971) 2007
 190 *Lonicera caucasica* Pall. 2008
 * 191 *Lonicera chrysantha* Turcz. (*Rossia extremiorientalis*, *Khekhtsir*, 1975) 2007
 A* 192 *Lonicera chrysantha* Turcz. var. *crassipes* Nakai (Hørsholm, 1991) 2008
 193 *Lonicera demissa* Rehder (Göteborg, 1977) 2008
 194 *Lonicera ferdinandi* Franch. (Berlin-Dahlem, 1979) 2008
 * 195 *Lonicera glaucescens* (Rydb.) Rydb. (Golden Seed Service, 1984) 2007
 196 *Lonicera iberica* M.Bieb. (Tbilisi, 1964) 2008
 197 *Lonicera involuocrata* (Richardson) Banks ex Spreng.
 (Berlin-Dahlem, 1978) 2008
 198 *Lonicera korolkowii* Stapf 2007
 199 *Lonicera ledebourii* Eschsch. (Kornik, 1999) 2008
 200 *Lonicera maackii* (Rupr.) Maxim. (Khabarovsk, 1967) 2008
 * 201 *Lonicera maximowiczii* (Rupr.) Maxim. (*Rossia extremiorientalis*,
Ternei, 1979) 2008

- 202 *Lonicera microphylla* Willd. ex Roem. et Schult. 2008
- * 203 *Lonicera nigra* L. (Sarajevo, 1983) 2008
- 204 *Lonicera periclymenum* L. 2008
- 205 *Lonicera prolifera* (Kirchn.) Rehder 2008
- * 206 *Lonicera ruprechtiana* Regel (*Rossia extremiorientalis*, Ternei, 1979) 2008
- 207 *Lonicera syringantha* Maxim. (Genève, 1960) 2007
- 208 *Lonicera tatarica* L. (Barnaul, 1977) 2008
- 209 *Lonicera tatarica* L. cv. Alba (Northampton, 1963) 2008
- 210 *Lonicera vesicaria* Kom. (Minsk, 1997) 2008
- * 211 *Lonicera xylosteum* L. (Tallinn, Kloostrimetsa, 1972) 2008
- * 212 *Sambucus canadensis* L. (Montréal, 1962) 2007
- 213 *Sambucus canadensis* L. cv. Aurea 2008
- 214 *Sambucus melanocarpa* A. Gray (Rogow, 2002) 2007
- 215 *Sambucus nigra* L. (Estonia, Kuressaare, 1969) 2008
- * 216 *Sambucus sieboldiana* Blume ex Miq. (*Insulae Kurilenses*, Kunashiri, 1981) 2008
- 217 *Sambucus sieboldiana* Blume ex Miq. 2007
- * 218 *Sambucus williamsii* Hance (*Rossia extremiorientalis*, Talmi, 1961) 2008
- * 219 *Symphoricarpos albus* (L.) S.F.Blake (East Lansing, 1974) 2008
- 220 *Symphoricarpos albus* (L.) S.F.Blake var. *laevigatus* (Fernald) S.F.Blake 2008
- 221 *Symphoricarpos occidentalis* Hook. (Ottawa, 1968) 2007
- 222 *Weigela decora* (Nakai) Nakai (Hørsholm, 1994) 2008
- 223 *Weigela florida* (Bunge) A.DC. (Pyongyang, 1988) 2008
- 224 *Weigela japonica* Thunb. (Dresden, 1960) 2008
- * 225 *Weigela middendorffiana* (Trautv. et C.A.Mey.) K.Koch (*Insula Sachalin*, Mt. Chekhov, 1961) 2008
- 226 *Weigela praecox* (Lemoine) L.H.Bailey 2007
- * 227 *Viburnum dentatum* L. var. *deamii* (Rehder) Fernald (Philadelphia, 1993) 2008
- 228 *Viburnum lantana* L. 2008
- 229 *Viburnum lantana* L. cv. Variegatum 2008
- 230 *Viburnum lentago* L. 2008
- A* 231 *Viburnum wrightii* Miq. (*Insulae Kurilensis*, Etorofu, 1961) 2008
- * 232 *Viburnum wrightii* Miq. (*Insulae Kurilenses*, Etorofu, 1961) 2008

Caryophyllaceae

- 233 *Arenaria grandiflora* L. (Giessen, 1972) 2007
- * 234 *Dianthus arenarius* L. (Tallinn, Järve, 2001) 2007
- 235 *Dianthus knappii* (Pant.) Asch. et Kanitz ex Borbás (Vácrátót, 2001) 2007
- 236 *Dianthus pungens* L. ssp. *ruscinonensis* (Boiss.) M.Bernal, M.Laínz et Munoz Garmendia (Göteborg, 2003) 2008
- 237 *Petrorhagia saxifraga* (L.) Link (Tartu, 1957) 2007
- 238 *Saponaria caespitosa* DC. (Innsbruck, 1993) 2007
- 239 *Saponaria lutea* L. (Fribourg, 1989) 2007
- 240 *Saponaria ocymoides* L. (Graz, 1972) 2008
- 241 *Silene chalcedonica* (L.) E.Krause (Szeged, 1988) 2008
- 242 *Silene friwaldskyana* Hampe (Glasgow, 1993) 2008

Celastraceae

- 243 *Celastrus orbiculatus* Thunb. 2008
 * 244 *Celastrus scandens* L. (Ottawa, 1965) 2008
 245 *Euonymus alatus* (Thunb.) Siebold (Kyoto, 1985) 2008
 * 246 *Euonymus alatus* (Thunb.) Siebold ssp. *sacrosanctus* (Koidz.)
 Vorosch. (*Rossia extremiorientalis*, Chornaya, 1961) 2008
 247 *Euonymus bungeanus* Maxim. (Beijing, 1957) 2008
 248 *Euonymus europaeus* L. 2008
 249 *Euonymus hamiltonianus* Wall. ssp. *maackii* (Rupr.) Kom.
 (Vladivostok, 1961) 2008
 * 250 *Euonymus hamiltonianus* Wall. ssp. *sieboldianus* (Blume)
 Hara (*Insula Sachalin*, Mt. Chekhov, 1961) 2008
 251 *Euonymus latifolius* (L.) Mill. (Tallinn, 1989) 2007
 252 *Euonymus macropterus* Rupr. 2008
 253 *Euonymus nanus* M.Bieb. 2008
 * 254 *Euonymus pauciflorus* Maxim. (*Rossia extremiorientalis*,
 Khekhtsir, 1975) 2008
 * 255 *Euonymus planipes* (Koehne) Koehne (*Rossia extremiorientalis*,
 Shamora, 1961) 2008
 256 *Tripterygium regelii* Sprague et Takeda 2007

Cercidiphyllaceae

- 257 *Cercidiphyllum japonicum* Siebold et Zucc. var. *magnificum* Nakai
 (Nikko, 1975) 2008

Clusiaceae

- * 258 *Hypericum ascyron* L. (Helsinki, 1994) 2008

Cornaceae

- 259 *Cornus alba* L. 2008
 260 *Cornus alba* L. cv. *Sibirica Variegata* 2008
 * 261 *Cornus alternifolia* L.f. (Ottawa, 1965) 2008
 262 *Cornus mas* L. 2007
 * 263 *Cornus obliqua* Raf. (Montréal, 1966) 2007
 264 *Cornus racemosa* Lam. 2007
 265 *Cornus sanguinea* L. (Estonia, Rakvere, 1960) 2008
 266 *Cornus sanguinea* L. ssp. *australis* (C.A.Mey.) Jav. (Estonia,
 Luua, 1958) 2007
 267 *Cornus sericea* L. 2008
 268 *Cornus sericea* L. cv. *Flaviramea* (Leipzig, 1957) 2008

Crassulaceae

- + 269 *Aeonium canariense* (L.) Webb et Berthel. var. *palmense*
 (Webb ex Christ) H.Y.Liu (Zürich, 1996) 2007
 + 270 *Echeveria fulgens* Lem. (Zürich, 2004) 2007
 + 271 *Echeveria gibbiflora* DC. (St. Petersburg, 1966) 2008
 + 272 *Echeveria rubromarginata* Rose (Zürich, 2001) 2008
 + 273 *Echeveria shaviana* E.Walther (St. Petersburg, 1987) 2008
 + 274 *Kalanchoe grandiflora* Wright et Arn. (Basel, 1975) 2008
 + 275 *Kalanchoe longiflora* Schltr. ex J.M.Wood (Villers-lès-Nancy, 1984) 2007

- + 276 *Kalanchoe rotundifolia* (Haw.) Haw. (Basel, 1994) 2008
- 277 *Rhodiola rosea* L. cv. *Atropurpurea* 2007
- 278 *Sedum monregalense* Balb. (Estonia, Kohila, 1994) 2007
- * 279 *Sedum reflexum* L. (*Caucasus, Marina Roschcha*, 1989) 2008
- * 280 *Sedum spurium* M.Bieb. (*Caucasus australi-orientalis, Talysh*, 1977) 2008
- 281 *Sedum spurium* M.Bieb. (Minsk, 1984) 2008
- 282 *Sedum telephium* L. ssp. *fabaria* (W.D.J.Koch) Kirschl. (Jena, 2006) 2008

Cucurbitaceae

- + 283 *Kedrostis africana* (L.) Cogn. (Monte Carlo, 2003) 2008

Dipsacaceae

- 284 *Cephalaria gigantea* (Ledeb.) Bobrov (Porrentruy, 1997) 2008
- 285 *Cephalaria litvinovii* Bobrov (Voronezh, 1988) 2008

Elaeagnaceae

- 286 *Elaeagnus commutata* Bernh. ex Rydb. (Estonia, Järvelja, 1960) 2008
- 287 *Elaeagnus multiflora* Thunb. (Yuzhno-Sakhalinsk, 1988) 2008
- 288 *Elaeagnus umbellata* Thunb. (Estonia, Polli, 1985) 2008
- * 289 *Hippophae rhamnoides* L. (Wrocław, 1997) 2008

Ericaceae

- 290 *Enkianthus campanulatus* (Miq.) G.Nicholson (Edinburgh, 1960) 2008
- 291 *Kalmia latifolia* L. (Berlin-Dahlem, 1960) 2007
- * 292 *Ledum groenlandicum* Oeder (Vancouver, 1962) 2008
- * 293 *Ledum palustre* L. var. *dilatatum* Wahlenb. (*Rossia extremiorientalis, Sovetskaya Gavan'*, 1967) 2008
- * 294 *Ledum palustre* L. var. *diversipilosum* Nakai (*Rossia extremiorientalis, Mt. Khualaza*, 1961) 2008
- 295 *Leucothoe fontanesiana* (Steud.) Sleumer 2007
- * 296 *Leucothoe grayana* Maxim. (*Insulae Kurilenses, Kunashiri*, 1981) 2008
- 297 *Lyonia ligustrina* (L.) DC. (Vancouver, 1962) 2007
- * 298 *Menziesia pentandra* Maxim. (*Insulae Kurilenses, Kunashiri*, 1981) 2008
- 299 *Menziesia pilosa* (Michx.) Juss. 2007
- 300 *Pieris floribunda* (Pursh ex Sims) Benth. et Hook.f. 2008
- 301 *Rhododendron arborescens* (Pursh) Torr. 2007
- 302 *Rhododendron brachycarpum* D.Don ex G.Don 2007
- 303 *Rhododendron camtschaticum* Pall. 2008
- 304 *Rhododendron canadense* (L.) Torr. 2008
- 305 *Rhododendron Catawbiense* Hybrids 2007
- 306 *Rhododendron ferrugineum* L. (Edinburgh, 1958) 2008
- 307 *Rhododendron x halense* Gremblich (Linz, 1962) 2008
- 308 *Rhododendron hirsutum* L. 2008
- 309 *Rhododendron Insigne* Hybrids (Edinburgh, 1958) 2007
- 310 *Rhododendron luteum* Sweet 2007
- * 311 *Rhododendron macrophyllum* D.Don ex G.Don (Vancouver, 1962) 2007
- 312 *Rhododendron maximum* L. (Antwerpen, 1962) 2007
- 313 *Rhododendron minus* Michx. cv. *Carolinianum Album* (Edinburgh, 1958) 2008
- 314 *Rhododendron myrtifolium* Schott et Kotschy (Cluj, 1966) 2008
- 315 *Rhododendron prinophyllum* (Small) Millais (Antwerpen, 1962) 2007

- 316 *Rhododendron prinophyllum* (Small) Millais (Vancouver, 1968) 2008
- * 317 *Rhododendron schlippenbachii* Maxim. (*Rossia extremiorientalis*, Talmi, 1961) 2008
- 318 *Rhododendron smirnowii* Trautv. 2007
- 319 *Rhododendron vaseyi* A.Gray 2007
- 320 *Vaccinium corymbosum* L. (Essen, 1962) 2008
- * 321 *Vaccinium uliginosum* L. (Tallinn, 1976) 2007
- Euphorbiaceae**
- + 322 *Euphorbia bubalina* Boiss. 2008
- + 323 *Phyllanthus grandifolius* L. 2007
- 324 *Securinega suffruticosa* (Pall.) Rehder 2008
- Fabaceae**
- 325 *Baptisia australis* (L.) R.Br. (Salaspils, 1988) 2008
- 326 *Caragana arborescens* Lam. (Leiden, 1957) 2008
- 327 *Caragana aurantiaca* Koehne (Wien, 1965) 2007
- 328 *Caragana frutex* (L.) K.Koch (Kiev, 1957) 2008
- 329 *Chamaecytisus albus* (Hacq.) Rothm. (Rogów, 1974) 2008
- 330 *Chamaecytisus glaber* (L.f.) Rothm. (Stockholm, 1957) 2008
- 331 *Chamaecytisus hirsutus* (L.) Link (Uppsala, 1957) 2008
- 332 *Chamaecytisus purpureus* (Scop.) Link (München, 1961) 2008
- 333 *Chamaecytisus supinus* (L.) Link. 2008
- 334 *Colutea arborescens* L. (Riga, 1960) 2008
- 335 *Colutea x media* Willd. (Salaspils, 1964) 2008
- * 336 *Cytisus decumbens* (Durande) Spach (Bescançon, 1997) 2008
- 337 *Cytisus nigricans* L. 2007
- 338 *Genista ovata* Waldst. et Kit. (Cluj, 1996) 2008
- * 339 *Genista tinctoria* L. (Olomouc, 1988) 2008
- 340 *Laburnum alpinum* (Mill.) Bercht. et J.Presl 2008
- * 341 *Lathyrus latifolius* L. (Siena, 2006) 2008
- 342 *Lathyrus nissolia* L. (Stuttgart, 2005) 2008
- * 343 *Lathyrus sylvestris* L. (*Estonia, Tapa*, 1992) 2008
- 344 *Lupinus hartwegii* Lindl. cv. Pixie Delight 2007
- 345 *Lupinus* cv. My Castle 2008
- * 346 *Lupinus nootkatensis* Donn ex Sims (Marnardal, 2005) 2008
- * 347 *Onobrychis montana* DC. (*Alpes Galliae, St. Veran*, 1994)
- 348 *Robinia luxurians* (Dieck) C.K.Schneid. (*Estonia, Laulasmaa*, 1965) 2007
- * 349 *Trifolium rubens* L. (*Samoëns*, 1994) 2008
- Fagaceae**
- 350 *Quercus petraea* (Matt.) Liebl. (Salaspils, 1964) 2008
- 351 *Quercus rubra* L. (*Estonia, Luua*, 1958) 2008
- Fumariaceae**
- 352 *Pseudofumaria alba* (Mill.) Lidén 2008
- 353 *Pseudofumaria lutea* (L.) Borkh. 2008
- Gentianaceae**
- * 354 *Gentiana asclepiadea* L. (Graz, 2002) 2008
- * 355 *Gentiana cruciata* L. (*Estonia, Arusta*, 1994) 2007

- 356 *Gentiana lutea* L. (Bergen, 1963) 2008
 357 *Gentiana pneumonanthe* L. (Brno, 1994) 2008
 358 *Gentiana septemfida* Pall. 2007
- Geraniaceae**
- * 359 *Geranium thunbergii* Siebold et Zucc. ex Lindl. et Paxton
 (Tsukuba, 2006) 2008
- Gesneriaceae**
- + 360 *Rhytidophyllum tomentosum* (L.) G.Don (Halle, 2003) 2008
- Grossulariaceae**
- 361 *Ribes alpinum* L. (Estonia, 1965) 2008
 362 *Ribes americanum* Mill. 2008
 363 *Ribes komarovii* Pojark. (Bayreuth, 1997) 2007
 364 *Ribes nigrum* L. var. *sibiricum* E.Wolf f. *fuscocarpum*
 (Krasnoyarsk, 1996) 2008
 365 *Ribes petraeum* Wulfen 2008
 * 366 *Ribes spicatum* Robson (Tallinn, Kloostrimetsa, 1972) 2008
- Hamamelidaceae**
- 367 *Fothergilla major* (Sims) Lodd. (Tharandt, 1976) 2007
- Hippocastanaceae**
- 368 *Aesculus hippocastanum* L. 2008
 369 *Aesculus × hybrida* DC. 2008
- Hydrangeaceae**
- 370 *Deutzia scabra* Thunb. (Osaka, 1970) 2008
 371 *Deutzia schneideriana* Rehder var. *laxiflora* Rehder
 (Berlin-Dahlem, 1960) 2008
 * 372 *Hydrangea paniculata* Siebold (*Insulae Kurilenses, Kunashiri*, 1981) 2008
 373 *Hydrangea paniculata* Siebold cv. *Praecox* 2008
 374 *Philadelphus coronarius* L. (Tartu, 1957) 2007
 * 375 *Philadelphus lewisii* Pursh (Vancouver, 1967) 2007
 * 376 *Philadelphus tenuifolius* Rupr. et Maxim. (*Rossia extremiorientalis, Kedrovaya Pad'*, 1961) 2007
- Hydrophyllaceae**
- * 377 *Phacelia hastata* Dougl. ex Lehm. (NARGS, 2005) 2007
- Juglandaceae**
- 378 *Juglans ailantifolia* Carrière 2007
 379 *Juglans cinerea* L. 2007
- Lamiaceae**
- 380 *Dracocephalum argunense* Fisch. ex Link (NARGS, 2001) 2008
 * 381 *Dracocephalum ruyschiana* L. (*Estonia, Jalase*, 1995) 2007
 382 *Dracocephalum wendelboi* Hedge (Estonia, Kirdalu, 2001) 2008
 383 *Horminum pyrenaicum* L. (Tartu, 1948) 2008
 384 *Horminum pyrenaicum* L. cv. *Album* 2008
 385 *Horminum pyrenaicum* L. cv. *Roseum* 2008
 386 *Nepeta manchuriensis* S.Moore (Reykjavik, 2005) 2008
 387 *Nepeta nuda* L. (Vácrátót, 2000) 2008
 388 *Nepeta sibirica* L. (Graz, 1984) 2008

- 389 *Phlomis tuberosa* L. (Freiburg, 1987) 2007
 390 *Physostegia virginiana* (L.) Benth. (Donetsk, 1981) 2008
 391 *Physostegia virginiana* (L.) Benth. cv. Summer Snow
 (Manchester, 1978) 2008
 * 392 *Salvia nemorosa* L. (*Caucasus borealis*, Marina Roshcha, 1990) 2008
 393 *Salvia patens* Cav. (Leipzig, 2007) 2007
 394 *Salvia pratensis* L. (Jena, 1989) 2008
 395 *Salvia przewalskii* Maxim. (Trento, 2002) 2008
 396 *Salvia scabiosifolia* Lam. (Tartu, 2002) 2007
 397 *Salvia x superba* (Silva Tar. et C.K.Schneid.) Stapf cv. Rose Queen 2008
 398 *Salvia verticillata* L. (Reykjavik, 2000) 2008
 399 *Stachys byzantina* K. Koch (Jena, 2006) 2008
 400 *Stachys macrantha* (K.Koch) Stearn 2007
- Malvaceae**
- 401 *Kitaibela vitifolia* Willd. (Minsk, 1989) 2008
 402 *Lavatera trimestris* L. cv. Novella 2008
- Menispermaceae**
- 403 *Menispermum canadense* L. 2008
 404 *Menispermum dauricum* DC. (Nizhni Novgorod, 1957) 2008
- Mimosaceae**
- + 405 *Albizia lophantha* (Willd.) Benth. (Bonn, 1997) 2008
- Moraceae**
- + 406 *Dorstenia contrajerva* L. (Strasbourg, 1961) 2008
 + 407 *Dorstenia elata* Gardner (Düsseldorf, 1994) 2008
 + 408 *Dorstenia hildebrandtii* Engl. (Plzen, 2003) 2008
 409 *Morus alba* L. (Samara, 1957) 2008
 410 *Morus bombycis* Koidz. (Cluj, 1965) 2008
 * 411 *Morus rubra* L. (Lisle, 1991) 2008
- Myricaceae**
- 412 *Myrica pensylvanica* Loisel. 2008
- Myrtaceae**
- + 413 *Metrosideros excelsa* Sol. ex Gaertn. 2008
 + 414 *Psidium littorale* Raddi (Stockholm, 1964) 2008
 + 415 *Syzygium paniculatum* Banks ex Gaertn. 2008
- Oleaceae**
- 416 *Forsythia europaea* Degen et Bald. (Cluj, 1958) 2008
 417 *Forsythia giraldiana* Lingelsh. (Salaspils, 1996) 2008
 418 *Fraxinus americana* L. cv. Iodocarpa (Montreal, 1965) 2007
 * 419 *Fraxinus chinensis* Roxb. var. *rhyrachophylla* (Hance) Hemsl.
 (*Rossia extremiorientalis*, Shamora, 1961) 2007
 420 *Fraxinus pennsylvanica* Marshall 2007
 421 *Fraxinus pennsylvanica* Marshall var. *subintegerrima* (Vahl) Fernald 2008
 422 *Ligustrum ibota* Siebold et Zucc. (København, 1991) 2008
 * 423 *Ligustrum tschonoskii* Decne. (*Insula Sachalin*, Mt. Chekhov, 1961) 2008
 424 *Ligustrum tschonoskii* Decne. var. *glabrescens* Koidz. (Hørsholm, 1991) 2007
 * 425 *Ligustrum vulgare* L. (Salzburg, 1983) 2008

- 426 *Ligustrum vulgare* L. cv. Aureovariegatum (Salaspils, 1964) 2008
 427 *Syringa komarowii* C.K.Schneid. 2008
 428 *Syringa pekinensis* Rupr. (Beijing, 1981) 2008
 429 *Syringa reticulata* (Blume) Hara 2008
 * 430 *Syringa reticulata* (Blume) Hara var. *amurensis* (Rupr.) Pringle (*Rossia extremiorientalis*, *Okeanskaya*, 1961) 2008
 431 *Syringa tomentella* Bureau et Franch. (Edinburgh, 1958)
 432 *Syringa villosa* Vahl (Beijing, 1977) 2007
 433 *Syringa wolfii* C.K.Schneid. (Nizhni Novgorod, 1957) 2008
- Paeoniaceae**
- 434 *Paeonia anomala* L. var. *intermedia* (C.A.Mey. ex Ledeb.) B.Fredtsch. et O.Fedtsch. (Bayreuth, 2000) 2008
 435 *Paeonia delavayi* Franch. (Wien, 1968) 2008
 * 436 *Paeonia lactiflora* Pall. (Estonia, Tamsa, 1998) 2008
 437 *Paeonia mlokosewitschii* Lomakin (Basel, 1980) 2007
 438 *Paeonia veitchii* Lynch var. *woodwardii* (Stapf et Cox) Stern 2007
- Papaveraceae**
- 439 *Papaver bracteatum* Lindl. (Brno, 2002) 2008
 440 *Papaver orientale* L. 2007
- Passifloraceae**
- + 441 *Passiflora coriacea* Juss. (Leiden, 2004) 2008
- Phormiaceae**
- + 442 *Phormium tenax* J.R.Forst. et G.Forst. (Zürich, 1994) 2007
- Phytolaccaceae**
- + 443 *Rivina humilis* L. (Tartu, 1959) 2008
- Pittosporaceae**
- + 444 *Hymenosporum flavum* (Hook.) F. Muell. 2007
 + 445 *Pittosporum crassifolium* Banks et Sol. ex A.Cunn. 2007
- Plantaginaceae**
- 446 *Psyllium sempervirens* (Crantz) Soják (Linz, 1978) 2008
- Polygonaceae**
- * 447 *Aconogonon weyrichii* (F.Schmidt ex Maxim.) H.Hara (*Insula Sachalin*, 1961) 2008
 * 448 *Bistorta officinalis* Delarbre (Paris, 1993) 2008
- Primulaceae**
- 449 *Dodecatheon meadia* L. (Tartu, 1957) 2008
 450 *Dodecatheon meadia* L. f. *album* (NARGS, 2002) 2008
 451 *Dodecatheon pulchellum* (Raf.) Merr. (Cogne, 1994) 2008
- Ranunculaceae**
- * 452 *Aconitum anthora* L. (Cogne, 2001) 2008
 * 453 *Aconitum lycoctonum* L. ssp. *vulparia* (Rchb. ex Spreng.) Nyman (Chambesy, 2000) 2008
 454 *Aconitum* × *tokii* Nakai (Trento, 2002) 2008
 455 *Actaea rubra* (Aiton) Willd. (Frankfurt, 1974) 2007
 456 *Actaea rubra* (Aiton) Willd. f. *neglecta* (Gillman) B.L.Rob. (Estonia, Tamsa, 1998) 2008

- 457 *Adonis vernalis* L. (Bydgoszcz, 1961) 2008
 458 *Anemone canadensis* L. (Liverpool, 1960) 2007
 459 *Cimicifuga americana* Michx. (Cluj-Napoca, 1987) 2008
 460 *Cimicifuga dahurica* (Turcz.) Torr. et A.Gray ex Maxim. (Warszawa, 1993) 2008
 461 *Cimicifuga elata* Nutt. (Göteborg, 2003) 2008
 462 *Cimicifuga europaea* Schipcz. (Lublin, 1991) 2008
 463 *Cimicifuga racemosa* (L.) Nutt. var. *cordifolia* (Pursh) A.Gray (Berlin, 1976) 2008
 464 *Clematis integrifolia* L. (Rabenau, 2003) 2008
 465 *Clematis integrifolia* L. (Oslo, 1957) 2007
 466 *Clematis recta* L. (Tübingen, 1997) 2008
 467 *Clematis recta* L. cv. *Purpurea* (Tübingen, 1997) 2007
 468 *Clematis vitalba* L. (København, 1958) 2007
 469 *Delphinium* cv. *Astolat* (Lublin, 2000) 2007
 470 *Delphinium* cv. *Pacific Giants* (Akureyri, 2005) 2007
 471 *Helleborus foetidus* L. (Potsdam, 1990) 2008
 472 *Pulsatilla albana* (Steven) Bercht. et J.Presl (Wien, 1998)
 * 473 *Pulsatilla patens* (L.) Mill. (*Estonia, Jalase*, 2004) 2008
 474 *Pulsatilla patens* (L.) Mill. cv. *Lutea* (Barnaul, 1962) 2007
 * 475 *Pulsatilla pratensis* (L.) Mill. (*Tallinn, Astangu*, 2004) 2008
 476 *Pulsatilla vulgaris* Mill. cv. *Alba* (Hamburg, 1970) 2008
 477 *Pulsatilla vulgaris* Mill. cv. *Rubra* (Liberec, 1972) 2007
 478 *Ranunculus gramineus* L. (Grüningen, 1961) 2008
 479 *Thalictrum aquilegifolium* L. (München, 1994) 2007
 480 *Thalictrum aquilegifolium* L. cv. *Album* 2007
 481 *Thalictrum aquilegifolium* L. cv. *Album* (Rouen, 1993) 2008
 482 *Thalictrum flavum* L. ssp. *glaucum* (Desf.) Batt. (London, 1988) 2008
 483 *Trollius asiaticus* L. (Edmonton, 1987) 2007
 484 *Trollius chinensis* Bunge (Edmonton, 1987) 2007

Rhamnaceae

- * 485 *Frangula alnus* Mill. (Tallinn, 1971) 2008
 * 486 *Rhamnus alpinus* L. (Champex, 1992) 2007

Rosaceae

- 487 *Alchemilla epipsila* Juz. (Moscow, 1982) 2007
 488 *Amelanchier alnifolia* (Nutt.) Nutt. 2007
 489 *Amelanchier laevis* Wiegand (Washington, 1975) 2007
 490 *Amelanchier lamarckii* F.G.Schroed. 2008
 491 *Amelanchier obovalis* (Michx.) Ashe (Estonia, Kaerepere, 1999) 2008
 492 *Amelanchier ovalis* Medik. (Ljubljana, 1959) 2008
 493 *Amelanchier sanguinea* (Pursh) DC. (Hørsholm, 1994) 2007
 494 *Amelanchier spicata* (Lam.) K.Koch 2008
 495 *Amelanchier spicata* (Lam.) K.Koch (Estonia, Reediku, 1965) 2007
 496 *Aronia arbutifolia* (L.) Pers. f. *leiocalyx* Rehder (Essen, 1957) 2007
 497 *Aronia melanocarpa* (Michx.) Elliot (Wisley, 1996) 2008
 498 *Aronia x prunifolia* (C.K.Schneid.) Graebn. 2008

- 499 *Aronia* × *prunifolia* (C.K.Schneid.) Graebn. cv. Floribunda (Kiel, 1996) 2008
- 500 × *Cerapadus miczurinii* Miczurin (Khorog, 1963) 2008
- 501 *Cerasus avium* (L.) Moench 2008
- 502 *Cerasus maximowiczii* (Rupr.) Kom. (Vladivostok, 1965) 2008
- 503 *Chaenomeles japonica* (Thunb.) Lindl. ex Spach 2008
- 504 *Cotoneaster nebrodensis* (Guss.) K.Koch (Paris, 1957) 2007
- 505 *Crataegus chrysocarpa* Ashe (Tartu, 1958) 2008
- 506 *Crataegus chrysocarpa* Ashe var. *phoenicea* Palmer (Helsinki, 1960) 2008
- * 507 *Crataegus crus-galli* L. (East Lansing, 1974) 2008
- 508 *Crataegus douglasii* Lindl. 2008
- 509 *Crataegus dsungarica* Zabel ex Lange (Samara, 1957) 2008
- 510 *Crataegus flabellata* (Bosc) K.Koch (Estonia, Tihemetsa, 1959) 2007
- A* 511 *Crataegus maximowiczii* C.K.Schneid. (*Rossia extremiorientalis*, *Kedrovaya Pad'*, 1961) 2008
- * 512 *Crataegus monogyna* Jacq. (Wien, 1975) 2008
- 513 *Crataegus pedicellata* Sarg. (Salaspils, 1979) 2008
- 514 *Crataegus punctata* Jacq. (Almaty, 1957) 2008
- 515 *Crataegus punctata* Jacq. f. *intermedia* Kruschke (Almaty, 1957) 2008
- * 516 *Crataegus rhipidophylla* Gand. (Salaspils, 1979) 2008
- 517 *Crataegus submollis* Sarg. (Samara, 1957) 2008
- 518 *Crataegus succulenta* (Link) Schrad. var. *macracantha* (Lodd.) Ettl. (Estonia, Järvelja, 1997) 2008
- * 519 *Crataegus turkestanica* Pojark. (*Pamir-Alai, Iskander-Kul*, 1962) 2008
- 520 *Dryas octopetala* L. (Tartu, 1950) 2008
- 521 *Exochorda* × *macrantha* (Lemoine) C.K.Schneid. 2008
- 522 *Exochorda serratifolia* S.Moore (Beijing, 1989) 2008
- 523 *Holodiscus discolor* (Pursh) Maxim. 2008
- 524 *Holodiscus dumosus* (Nutt. ex Hook.) A.Heller (Oslo, 1995)
- 525 *Malus baccata* (L.) Borkh. (Vladivostok, 1973) 2008
- * 526 *Malus baccata* (L.) Borkh. var. *mandshurica* (Maxim.) C.K.Schneid. (*Rossia extremiorientalis, Okeanskaya*, 1961) 2008
- 527 *Malus* × *micromalus* Makino (Hørsholm, 1991) 2008
- 528 *Malus sieboldii* (Rehder) Fiala cv. Calocarpa (Salaspils, 1990) 2008
- * 529 *Malus sieversii* (Ledeb.) M.Roem. (*Kazakhstan, Alma-Arasan*, 1986) 2008
- * 530 *Malus sylvestris* Mill. (Salaspils, 1980) 2008
- 531 *Malus toringo* (Siebold) Siebold ex de Vriese (Pyongyang, 1985) 2008
- 532 *Mespilus germanica* L. 2008
- 533 *Padus maackii* (Rupr.) Kom. (Tartu, 1958) 2008
- 534 *Padus virginiana* (L.) Mill. 2008
- 535 *Photinia villosa* (Thunb.) DC. (Vancouver, 1959) 2008
- 536 *Physocarpus capitatus* (Pursh) Kuntze (Bruxelles, 1957) 2008
- 537 *Physocarpus malvaceus* (Greene) Kuntze (Berlin-Dahlem, 1979) 2008
- * 538 *Physocarpus monogynus* (Torr.) Coult. (Washington, 1978) 2008
- 539 *Physocarpus opulifolius* (L.) Maxim. 2008
- 540 *Physocarpus opulifolius* (L.) Maxim. var. *intermedius* (Rydb.) B.L.Rob. 2008

- 541 *Potentilla atrosanguinea* Lodd. ex D.Don var. *argyrophylla* (Wall. ex Lehm.) Grierson et D.G.Long (Berlin-Dahlem, 1991) 2007
- 542 *Prinsepia uniflora* Batalin (Lyon, 2000) 2008
- 543 *Prunus cerasifera* Ehrh. ssp. *divaricata* (Ledeb.) C.K.Schneid. 2008
- * 544 *Pyrus pyraeaster* Burgsd. (*Germania, Insula Vilm*, 1994) 2008
- 545 *Rhodotypos scandens* (Thunb.) Makino 2008
- * 546 *Rosa acicularis* Lindl. (*Rossia extremiorientalis, Zeya*, 1975) 2008
- * 547 *Rosa amblyotis* C.A.Mey. (*Insula Sachalin, Yuzhno-Sakhalinsk*, 1981) 2007
- 548 *Rosa arvensis* Huds. 2008
- * 549 *Rosa beggeriana* Schrenk (*Tianschan occidentalis, Alma-Arasan*, 1986) 2007
- * 550 *Rosa blanda* Aiton (Philadelphia, 1983) 2008
- 551 *Rosa canina* L. cv. *Inermis* (Iași, 1984) 2008
- 552 *Rosa carolina* L. var. *grandiflora* (Baker) Rehder (Glencoe, 1988) 2008
- * 553 *Rosa corymbifera* Borkh. (*Tianschan occidentalis, Chimgan*, 1981) 2008
- 554 *Rosa elegantula* Rolfe (Leiden, 1957) 2007
- 555 *Rosa gallica* L. (Cluj-Napoca, 1983) 2008
- 556 *Rosa glauca* Pourr. (Riga, 1963) 2008
- 557 *Rosa helenae* Rehder et E.H.Wilson (Ashgabat, 1957) 2007
- 558 *Rosa hemsleyana* Täckh. (Stockholm, 1957) 2008
- 559 *Rosa x macrantha* Desp. (Kalmthout, 1961) 2008
- * 560 *Rosa maximowicziana* Regel (*Rossia extremiorientalis, Shamora*, 1980) 2008
- 561 *Rosa moyesii* Hemsl. et E.H.Wilson 2008
- 562 *Rosa multiflora* Thunb. ex Murray (Koshigaya, 1983) 2008
- 563 *Rosa nitida* Willd. (Helsinki, 1992) 2008
- 564 *Rosa palustris* Marshall (Philadelphia, 1983) 2008
- * 565 *Rosa pendulina* L. (Tübingen, 1981) 2007
- 566 *Rosa platyacantha* Shrenk 2007
- 567 *Rosa roxburghii* Tratt. f. *normalis* Rehder et E.H.Wilson (Koshigaya, 1987) 2008
- * 568 *Rosa rugosa* Thunb. (*Insulae Kurilenses, Kunashiri*, 1981) 2008
- 569 *Rosa rugosa* Thunb. cv. *Alba* (Nijmegen, 1988) 2008
- 570 *Rosa setipoda* Hemsl. et E.H.Wilson (Helsinki, 1960) 2008
- * 571 *Rosa spinosissima* L. (*Sibiria australis, Aktash*, 1986) 2008
- 572 *Rosa spinosissima* L. cv. *Plena* (Kalmthout, 1961) 2008
- 573 *Rosa sweginzowii* Koehne (Kalmthout, 1961) 2008
- 574 *Rosa tomentosa* Sm. (Liège, 1984) 2008
- 575 *Rosa turcica* Rouy (Amsterdam, 1958) 2007
- 576 *Rosa virginiana* Herrm. (Strasbourg, 1996) 2008
- 577 *Rubus idaeus* L. f. *chlorocarpus* Krause (Turku, 2000) 2008
- 578 *Rubus laciniatus* Willd. (Amsterdam, 1958) 2008
- 579 *Rubus occidentalis* L. (South Hadley, 1997) 2008
- * 580 *Rubus odoratus* L. (Montréal, 1970) 2008
- 581 *Rubus parviflorus* Nutt. 2008
- * 582 *Rubus parvifolius* L. (*Insulae Kurilenses, Kunashiri*, 1982) 2008
- 583 *Sanguisorba tenuifolia* Fisch. ex Link var. *alba* Trautv. et C.A.Mey. 2007
- 584 *Sibbaldia olgae* Juz. et Ovez. (Rabenau, 1986) 2008

- 585 *Sibiraea altaiensis* (Laxm.) C.K.Schneid. 2008
- * 586 *Sorbaria sorbifolia* (L.) A.Braun (*Rossia extremiorientalis*, Svetlaya, 1977) 2008
- * 587 *Sorbus americana* Marshall (Montréal, 1957) 2007
- * 588 *Sorbus amurensis* Koehne (*Rossia extremiorientalis*, Mt. Khualaza, 1961) 2007
- * 589 *Sorbus aria* (L.) Crantz (Klagenfurt, 1978) 2008
- 590 *Sorbus commixta* Hedl. (Sapporo, 1967) 2008
- 591 *Sorbus decora* (Sarg.) C.K.Schneid. (Philadelphia, 1975) 2008
- 592 *Sorbus* × *hybrida* L. (Oulu, 1966) 2007
- * 593 *Sorbus intermedia* (Ehrh.) Pers. (*Estonia, insula Saaremaa*, Lümada, 1971) 2007
- 594 *Sorbus koehneana* C.K.Schneid. (*Estonia, Kokemäe*, 1984) 2008
- 595 *Sorbus latifolia* (Lam.) Pers. (Cluj, 1958) 2008
- 596 *Sorbus mougeotii* Soy.-Will. (Stockholm, 1958) 2008
- 597 *Sorbus pohuashanensis* (Hance) Hedl. (Hørsholm, 1991) 2008
- * 598 *Sorbus rupicola* (Syme) Hedl. (*Estonia, insula Saaremaa*, Sõrve, 1982) 2008
- * 599 *Sorbus sambucifolia* (Cham. et Schltld.) Roem. (*Rossia extremiorientalis, Sovetskaya Gavan'*, 1967) 2008
- 600 *Spiraea japonica* L.f. cv. Bumalda (Warszawa, 1974) 2007
- 601 *Spiraea japonica* L.f. cv. Little Princess (Salaspils, 1962) 2007
- * 602 *Spiraea latifolia* (Aiton) Borkh. (Montréal, 1982) 2008
- 603 *Spiraea* × *margaritae* Zabel (Genève, 1965) 2007
- 604 *Spiraea rosthornii* Pritz. (Moscow, 1975) 2007
- * 605 *Spiraea salicifolia* L. (*Rossia extremiorientalis, Lazo*, 1977) 2008
- Rubiaceae**
- 606 *Asperula purpurea* (L.) Ehrend. (Cluj-Napoca, 1991) 2008
- + 607 *Psychotria punctata* Vatke (Düsseldorf, 2001) 2008
- Rutaceae**
- 608 *Dictamnus albus* L. (St. Petersburg, 1981) 2008
- 609 *Dictamnus albus* L. (Moscow, 1959) 2008
- 610 *Dictamnus albus* L. cv. Albiflorus (Berlin, 1987) 2008
- + 611 *Murraya paniculata* (L.) Jack (Store Milde, 1986) 2008
- 612 *Phellodendron amurense* Rupr. 2008
- 613 *Phellodendron lavalleyi* Dode (Coimbra, 1966) 2007
- * 614 *Phellodendron sachalinense* (F.Schmidt) Sarg. (*Insula Sachalin, Yuzhno-Sakhalinsk*, 1962) 2008
- 615 *Ptelea trifoliata* L. 2008
- 616 *Ruta graveolens* L. 2008
- Saxifragaceae**
- * 617 *Bergenia crassifolia* (L.) Fritsch (Brno, 1999) 2007
- 618 *Darmera peltata* (Torr. ex Benth.) Voss 2008
- 619 *Heuchera americana* L. (Marburg, 1979) 2007
- 620 *Peltoboykinia tellimoides* (Maxim.) Hara (Yekaterinburg, 1988) 2008
- 621 *Rodgersia podophylla* A.Gray (Wien, 1967) 2008

- 622 *Saxifraga aizoides* L. var. *atrorubens* (Bertol.) Sternb. (Oldenburg, 1997) 2008
 623 *Saxifraga manshuriensis* Kom. (Moscow, 1982) 2007
 624 *Saxifraga pensylvanica* L. (Saarbrücken, 1989) 2008
 625 *Saxifraga rotundifolia* L. 2007

Schisandraceae

- * 626 *Schisandra chinensis* (Turcz.) Baill. (*Rossia extremiorientalis*, Okeanskaya, 1961) 2008

Scrophulariaceae

- 627 *Asarina procumbens* Mill. (Wisley, 2003) 2007
 628 *Mimulus guttatus* Fisch. ex DC. (Amsterdam, 1959) 2007
 629 *Penstemon confertus* Douglas (Berlin-Dahlem, 1998) 2008
 630 *Penstemon digitalis* Nutt. cv. *Purpurea* (Prague, 2001) 2008
 + 631 *Tetranema roseum* (M.Martens et Galeotti) Standl. et Steyerm. 2008
 632 *Verbascum phoeniceum* L. 2008
 633 *Veronicastrum sachalinense* (Borissova) T.Yamaz. (Graz, 2004) 2008
 634 *Veronicastrum sibiricum* (L.) Pennell (Innsbruck, 1996) 2008

Solanaceae

- 635 *Lycium barbarum* L. (Beijing, 1957) 2007
 636 *Nicotiana sylvestris* Speg. et Comes 2007
 637 *Physochlaina orientalis* (M.Bieb.) G.Don (Moscow, 1990) 2007
 * 638 *Physochlaina orientalis* (M.Bieb.) G.Don (Pyatigorsk, 2004) 2008
 639 *Solanum dulcamara* L. 2007
 640 *Solanum dulcamara* L. f. *album* (Weston) Rehder 2007
 * 641 *Solanum kitagawae* Schoenb.-Tem. (Krasnoyarsk, 1991) 2007

Staphyleaceae

- 642 *Staphylea pinnata* L. 2008
 * 643 *Staphylea trifolia* L. (East Lansing, 1989) 2008

Tiliaceae

- + 644 *Entelea arborescens* R.Br. 2007
 645 *Tilia japonica* (Miq.) Simonk. (Kyoto, 1974) 2008
 646 *Tilia mandshurica* Rupr. et Maxim. (Vladivostok, 1978) 2008
 647 *Tilia x moltkei* Späth (Kaliningrad, 1965) 2007
 648 *Tilia platyphyllos* Scop. ssp. *cordifolia* (Besser) C.K.Schneid. (Estonia, Harku, 1964) 2007
 649 *Tilia platyphyllos* Scop. cv. *Vitifolia* (Århus, 1972) 2007

Turneraceae

- + 650 *Turnera ulmifolia* L. (Tenerife, 2006) 2008

Valerianaceae

- 651 *Centranthus ruber* (L.) DC. (Cluj-Napoca, 2007) 2008
 * 652 *Valeriana alliariifolia* Adams (Caucasus magnus, Klukhor, 1982) 2008

Verbenaceae

- + 653 *Clerodendrum speciosissimum* Van Geert (Dresden, 1997) 2008
 + 654 *Lantana camara* L. (St. Petersburg, 1971) 2008
 + 655 *Stachytarpheta jamaicensis* (L.) Vahl (Mauritius, 2003) 2008

Violaceae

- 656 *Viola elatior* Fr. (Mühlhausen, 1979) 2008
 657 *Viola odorata* L. (Tallinn, 1989) 2007

Monocotyledoneae**Alliaceae**

- 658 *Allium aflatunense* B.Fedtsch. 2007
 659 *Allium amplexans* Torr. 2007
 660 *Allium auctum* Omelczuk 2008
 * 661 *Allium backhousianum* Regel (Estonia, Tamsa, 2006) 2008
 * 662 *Allium brevistylum* S.Watson (Göteborg, 1999) 2008
 * 663 *Allium brevistylum* S.Watson (Grenoble, 1998) 2008
 664 *Allium carinatum* L. ssp. *pulchellum* (G.Don) Bonnier et Layens
 (Eberswalde, 1993) 2007
 665 *Allium carolinianum* DC. (Rostock, 1994) 2008
 666 *Allium cernuum* Roth 2007
 667 *Allium crenulatum* Wiegand (Göteborg, 1992) 2008
 668 *Allium denudatum* (F.Delaroche) Redoute (Moscow, 1993) 2007
 669 *Allium flavum* L. var. *minus* Boiss. (Linz, 1996) 2008
 670 *Allium gooddingii* Ownbey (Oslo, 2004) 2008
 671 *Allium hymenorrhizum* Ledeb. (Leipzig, 1997) 2008
 * 672 *Allium insubricum* Boiss. et Reut. (Göttingen, 1998) 2008
 673 *Allium jesdianum* Boiss. (Estonia, Tamsa, 1998) 2007
 674 *Allium macranthum* Baker (Grenoble, 1994) 2008
 * 675 *Allium microdictyon* Prokh. (Estonia, Tamsa, 2005) 2008
 676 *Allium moly* L. 2007
 677 *Allium obliquum* L. 2008
 678 *Allium ochotense* Prokh. 2008
 * 679 *Allium pseudoseravschanicum* Popov et Vved. ex Vved.
 (Estonia, Tamsa, 2005) 2008
 680 *Allium ramosum* L. 2007
 681 *Allium rotundum* L. 2007
 682 *Allium rotundum* L. ssp. *waldsteinii* (G.Don) K.Richt. 2007
 683 *Allium sarawschanicum* Regel (Latvia, Rozula, 2002) 2008
 684 *Allium schubertii* Zucc. 2008
 * 685 *Allium sphaerocephalon* L. (Cogne, 1996) 2007
 686 *Allium stellatum* Ker-Gawl. (Tübingen, 1996) 2007
 687 *Allium zebdanense* Boiss. et Noë (München Nymphenburg, 1991) 2008
 688 *Allium ursinum* L. 2007
 689 *Allium validum* S.Watson (Wien, 1996) 2008
 690 *Allium victorialis* L. 2008
 * 691 *Allium woronowii* Miscz. ex Grossh. (Salaspils, 1998) 2008
 692 *Caloscordum neriniflorum* Herb. (Novosibirsk, 2000) 2007
 693 *Nothoscordum bivalve* (L.) Britt. (Stuttgart, 1994) 2007

Amaryllidaceae

- 694 *Galanthus elwesii* Hook.f. 2007

- 695 *Galanthus nivalis* L. 2007
 696 *Galanthus platyphyllus* Traub et Moldenke (Lviv, 1978) 2008
 697 *Leucojum nicaeense* Ardoino (Oxford, 1994) 2007
 * 698 *Leucojum vernum* L. var. *carpathicum* Sweet (*Carpates orientales*, Biltse Volitsa, 1977) 2008
 699 *Narcissus confusus* Pugsley (Madrid, 1994) 2007
 700 *Narcissus rupicola* Dufour 2008
- Anthericaceae**
- 701 *Anthericum liliago* L. 2008
 * 702 *Anthericum ramosum* L. (Gotland, 1999) 2008
- Araceae**
- + 703 *Anthurium bakeri* Hook.f. (Montréal, 1961) 2008
 704 *Arisaema amurense* Maxim. (Estonia, Tartu, 1998) 2007
 705 *Arisaema flavum* (Forssk.) Schott (Estonia, Tamsa, 1998) 2007
 * 706 *Arum maculatum* L. (*Caucasus borealis*, *Gelendzhik*, 1989) 2008
 * 707 *Arum maculatum* L. (Villers-lès-Nancy, 1999) 2007
 + 708 *Remusatia vivipara* (Roxb.) Schott (Tübingen, 1987) 2008
- Arecaceae**
- + 709 *Sabal minor* (Jacq.) Pers. (Barcelona, 1991) 2008
- Asphodelaceae**
- 710 *Eremurus stenophyllus* (Boiss. et Buhse) Baker (Lublin, 2003) 2008
 * 711 *Paradisea liliastrum* (L.) Bertol. (Pavia, 2002) 2007
- Bromeliaceae**
- + 712 *Acanthostachys strobilacea* (Schult.f.) Klotzsch 2008
 + 713 *Puya mirabilis* (Mez) L.B.Sm. (Gent, 1976) 2008
- Colchicaceae**
- 714 *Bulbocodium versicolor* (Ker-Gawl.) Spreng. 2007
- Commelinaceae**
- + 715 *Tradescantia sillamontana* Matuda (Salaspils, 1980) 2007
 + 716 *Tradescantia spathacea* Sw. 2008
- Convallariaceae**
- 717 *Convallaria majalis* L. cv. *Rosea* (Tallinn, 1961) 2007
 * 718 *Polygonatum biflorum* (Walter) Elliott (Northampton, 1993) 2007
 719 *Smilacina stellata* (L.) Desf. (Edmonton, 1986) 2008
- Costaceae**
- + 720 *Costus speciosus* (J.König) Sm. (Köln, 1971) 2008
- Cyperaceae**
- + 721 *Kyllinga monocephala* Rottb. (Stockholm, 1972) 2008
- Hemerocallidaceae**
- * 722 *Hemerocallis minor* Mill. (*Sibiria australis*, *Khapcheranga*, 1985) 2008
- Hostaceae**
- 723 *Hosta sieboldii* (Paxton) Ingram (Tartu, 2005) 2008
 724 *Hosta ventricosa* Stearn (Freiburg, 1999) 2008
- Hyacinthaceae**
- 725 *Bellevalia forniculata* (Fomin) Delaunay 2008
 726 *Brimeura amethystina* (L.) Chouard 2007

- 727 *Camassia cusickii* S.Watson (Halle, 1961) 2008
 728 *Chionodoxa luciliae* Boiss. cv. Alba 2007
 729 *Chionodoxa sardensis* Whittall 2008
 730 *Galtonia candicans* (Baker) Decne. 2008
 731 *Galtonia viridiflora* Verd. 2007
 * 732 *Muscari tenuiflorum* Tausch (Liberec, 1995) 2008
 733 *Ornithogalum boucheanum* (Kurth) Asch. 2007
 734 *Ornithogalum fimbriatum* Willd. 2008
 735 *Ornithogalum fischeranum* Krasch. 2007
 * 736 *Ornithogalum oligophyllum* E.D.Clarke (N Caucasus, Dombai, 1964) 2008
 737 *Ornithogalum refractum* Kit. ex Schltdl. 2008
 738 *Ornithogalum woronowii* Krasch. 2008
 739 *Puschkinia scilloides* Adams cv. Alba 2008
 740 *Scilla bifolia* L. 2007
 741 *Scilla bifolia* L. cv. Rosea 2007
 742 *Scilla litardierei* Breistr. 2007
 743 *Scilla mischtschenkoana* Grossh. 2007
 744 *Scilla rosenii* K.Koch 2007
 745 *Scilla siberica* Haw. cv. Alba 2007

Iridaceae

- * 746 *Crocus vernus* (L.) Hill (*Carpates orientales*, Sredne-Veretski, 1977) 2007
 747 *Crocus vernus* (L.) Hill ssp. *albiflorus* (Kit.) Asch. et Graebn. 2008
 748 *Gladiolus imbricatus* L. 2008
 749 *Iris aphylla* L. 2008
 750 *Iris graminea* L. 2008
 751 *Iris sanguinea* Hornem. ex Donn (Halle, 2000) 2008
 * 752 *Iris setosa* Pall. ex Link (Yakutsk, 2004) 2008
 753 *Iris spuria* L. ssp. *carthalinae* (Fomin) B.Mathew (Tbilisi, 1978) 2008
 754 *Iris versicolor* L. (Jena, 1997) 2008
 755 *Sisyrinchium angustifolium* Mill. (Göttingen, 1993) 2008
 756 *Sisyrinchium bellum* S.Watson cv. Album (NARGS, 2002) 2007

Liliaceae

- 757 *Erythronium sibiricum* (Fisch. et C.A.Mey.) Krylov (St. Petersburg, 1983) 2008
 * 758 *Fritillaria armena* Boiss. (Paha, 2002) 2008
 759 *Fritillaria gussichiae* (Degen et Dörfl.) Rix (Halle, 1995) 2008
 760 *Fritillaria meleagroides* Patrin ex Schult. f. 2008
 761 *Fritillaria michailovskyi* Fomin (Harrogate, 1993) 2008
 * 762 *Fritillaria olivieri* Baker (Göteborg, 1998) 2008
 763 *Fritillaria sewerzowii* Regel (Salaspils, 1997) 2008
 764 *Fritillaria tubiformis* Gren. et Godr. 2008
 765 *Lilium hansonii* Leichtlin ex D.D.T.Moore (Oslo, 1998) 2008
 766 *Lilium martagon* L. var. *mecsekense* Soó (Bayreuth, 1997) 2007
 767 *Tulipa kaufmanniana* Regel 2008

Melanthiaceae

- 768 *Veratrum nigrum* L. (Trieste, 1978) 2008

Phormiaceae

- + 769 *Dianella caerulea* Sims (St. Petersburg, 1977) 2007

Poaceae

- * 770 *Koeleria macrantha* (Ledeb.) Schult. (Tallinn, Maarjamäe, 2005) 2007

Zingiberaceae

- + 771 *Brachychilum horsfieldii* O.G. Petersen (Bratislava, 1991) 2007
 + 772 *Hedychium coccineum* Buch.-Ham. (Jena, 1972) 2008

Trilliaceae

- 773 *Trillium cernuum* L. (South Hadley, 1998) 2008
 774 *Trillium erectum* L. (South Hadley, 1997) 2007
 775 *Trillium grandiflorum* (Michx.) Salisb. (East Lansing, 1997)

Seminum collectores: A. Birnbaum, J. Elliku, H. Dikker, T. Jaanus, S. Janson, A. Kaur, K. Kirotar, V. Kuusmann, J. Mettik, L. Mik, M. Raidma, M. Seidelberg, E. Siibak, A. Vammus, A. Visnapuu

II Semina et sporae plantarum spontanearum in diversis regionibus Estoniae collecta

PTERIDOPHYTA**Dryopteridaceae**

- 776 *Dryopteris cristata* (L.) A.Gray – drained peatland *Vaccinium myrtillus* pine (*Pinus sylvestris*) forest (*Vaccinio myrtilli–Pinetum*), Männiku, Tallinn, N Estonia 59°22'08" N 024°42'32" E 02.08.2007 U L

Polypodiaceae

- 777 *Polypodium vulgare* L. – dry boreal *Vaccinium myrtillus* pine (*Pinus sylvestris*) forest (*Vaccinio myrtilli–Pinetum*), Kloostrimetsa, Tallinn, N Estonia 59°29'00" N 024°52'02" E 16.12.2008 OA

SPERMATOPHYTA**GYMNOSPERMAE****Cupressaceae**

- 778 *Juniperus communis* L. – fresh boreal grassland (*Potentillo erectae–Deschampsietum cespitosae*) with *Juniperus communis*, Lääneotsa, Prangli Island, N Estonia 59°37'08" N 025°00'21" E 22.0 8.2008 JE

ANGIOSPERMAE**Dicotyledoneae****Aceraceae**

- 779 *Acer platanoides* L. – roadside, Pidula, Saaremaa Island, W Estonia 58°25'10" N 022°08'50" E 04.10.2007 JE

Apiaceae

- 780 *Angelica sylvestris* L. – dry boreal *Vaccinium vitis-idaea* oak–pine (*Quercus robur–Pinus sylvestris*) forest (*Vaccinio vitis-idaeo–Quercu–Pinetum*), Kloostrimetsa, Tallinn, N Estonia 59°28'11" N 024°53'02" E 31.08.2007 MR

- 781 *Anthriscus sylvestris* (L.) Hoffm. – fresh boreo-nemoral grassland (*Festuco rubrae–Deschampsietum cespitosae*), Kloostrimetsa, Tallinn, N Estonia 59°28'05" N 024°52'37" E 13.07.2007 MR
- 782 *Cicuta virosa* L. – lakeside, Mähuste Lake, Koitjärve, Harju county, N Estonia 59°24'33" N 025°36'22" E 10.08.2007 10.08.2007 MR
- 783 *Daucus carota* L. – Pidula Park, Pidula, Saaremaa Island, W Estonia 58°25'12" N 022°09'11" E 04.10.2007 MR
- 784 *Daucus carota* L. – dry alvar grassland (*Trifolio montani–Filipenduletum vulgaris*), Aandu, Rapla county, NW Estonia 59°09'25" N 024°44'42" E 26.09.2007 UL
- 785 *Heracleum sibiricum* L. – abandoned field, Rae, Harju county, N Estonia 59°22'48" N 024°53'45" E 12.12.2007 OA, SJ
- 786 *Heracleum sibiricum* L. – dry boreal grassland (*Festuco rubrae–Agrostietum capillaris*), Koitjärve, Harju county, N Estonia 59°24'29" N 025°36'17" E 10.08.2007 UL
- 787 *Libanotis montana* Crantz – dry boreal grassland (*Festuco rubrae–Agrostietum capillaris*), Koitjärve, Harju county, N Estonia 59°24'29" N 025°36'17" E 10.08.2007 MR
- 788 *Libanotis montana* Crantz – dry alvar grassland (*Trifolio montani–Filipenduletum vulgaris*), Jõelähtme, Harju county, N Estonia 59°26'13" N 025°08'41" E 22.08.2007 MR
- 789 *Pimpinella major* (L.) Huds. – fresh alvar *Calamagrostis* pine (*Pinus sylvestris*) forest (*Calamagrostio–Pinetum*), Aandu, Rapla county, NW Estonia 59°09'36" N 024°45'06" E 02.09.2007 UL
- 790 *Pimpinella saxifraga* L. – dry alvar grassland (*Trifolio montani–Filipenduletum vulgaris*), Jõelähtme, Harju county, N Estonia 59°26'13" N 025°08'41" E 22.08.2007 HR, MR
- 791 *Torilis japonica* (Houtt.) DC. – fresh boreo-nemoral ash–elm (*Fraxinus excelsior–Ulmus glabra*) forest (*Lunario–Fraxino–Ulmetum*), Kadriorg, Tallinn, N Estonia 59°26'23" N 024°48'13" E 24.09.2007 M R, NA

Asteraceae

- 792 *Achillea millefolium* L. – roadside, Kloostrimetsa, Tallinn, N Estonia 59°27'53" N 024°53'10" E 31.08.2007 MR
- 793 *Achillea millefolium* L. – white dune (*Honckenyo–Leymetum*), Pelgurand, Tallinn, N Estonia 59°26'51" N 024°41'03" E 30.09.2007 MR
- 794 *Achillea millefolium* L. – dry alvar grassland (*Trifolio montani–Filipenduletum vulgaris*), Türisalu, Harju county, NW Estonia 59°25'14" N 024°19'48" E 08.10.2008 MR
- 795 *Arctium lappa* L. – fresh boreo-nemoral ash–elm (*Fraxinus excelsior–Ulmus glabra*) forest (*Lunario–Fraxino–Ulmetum*), Kadriorg, Tallinn, N Estonia 59°26'23" N 024°48'13" E 24.09.2007 MR, NA
- 796 *Arctium tomentosum* Mill. – Velise Park, Velisemõisa, Rapla county, W Estonia 58°46'30" N 024°28'14" E 25.10.2007 M R
- 797 *Artemisia campestris* L. – streetside, Uuslinn, Tallinn, N Estonia 59°26'15" N 024°48'02" E 24.09.2007 MR, NA

- 798 *Carlina vulgaris* L. – dry alvar grassland (*Trifolio montani–Filipenduletum vulgaris*), Aandu, Rapla county, NW Estonia 59°09'52" N 024°44'43" E 07.09.2007 UL
- 799 *Cirsium arvense* (L.) Scop. – roadside, Kelnase, Prangli Island, N Estonia 59°38'01" N 025°00'35" E 07.09.2007 MR
- 800 *Cirsium oleraceum* (L.) Scop. – ditch, Kloostrimetsa, Tallinn, N Estonia 59°28'05" N 024°52'49" E 27.09.2007 MS
- 801 *Cirsium oleraceum* (L.) Scop. – near pond, Kloostrimetsa, Tallinn, N Estonia 59°28'02" N 024°52'43" E 15.09.2007 MS
- 802 *Cirsium palustre* (L.) Scop. – mixotrophic mire (*Calamagrostetum canescentis*), Nõmme, Tallinn, N Estonia 59°22'10" N 024°42'20" E 02.08.2007 MR
- 803 *Crepis paludosa* (L.) Moench – arboretum, Kloostrimetsa, Tallinn, N Estonia 59°28'11" N 024°52'59" E 01.08.2008 MR, VK
- 804 *Crepis tectorum* L. – dry boreal *Vaccinium vitis-idaea* oak-pine (*Quercus robur–Pinus sylvestris*) forest (*Vaccinio vitis-idaeo–Quercu–Pinetum*), Kloostrimetsa, Tallinn, N Estonia 59°28'14" N 024°52'45" E 27.07.2007 MR
- 805 *Echinops sphaerocephalus* L. – naturalized, poor paludiefed grassland (*Geranio palustris–Filipenduletum*), Sõjamäe, Tallinn, N Estonia 59°26'00" N 024°51'47" E 26.09.2008 OA
- 806 *Erigeron acer* L. – abandoned field, Sausti, Harju county, N Estonia 59°18'42" N 024°44'28" E 12.08.2007 OA
- 807 *Gnaphalium sylvaticum* L. – abandoned field, Rootsi, Rapla county, NW Estonia 59°09'25" N 024°44'42" E 26.09.2007 UL
- 808 *Helichrysum arenarium* (L.) Moench – dry boreal grassland (*Festuco rubrae–Anthoxanthesetum*) Väraska, Põlva county, SO Estonia 57°56'42" N 027°39'04" E 21.09.2007 MR
- 809 *Hypochaeris maculata* L. – dry boreal *Vaccinium vitis-idaea* pine (*Pinus sylvestris*) forest (*Vaccinio vitis-idaeo–Pinetum*), Hiiu, Tallinn, N Estonia 59°22'16" N 024°41'23" E 02.08.2007 OA, MR
- 810 *Lapsana communis* L. – dry boreal *Vaccinium vitis-idaea* oak-pine (*Quercus robur–Pinus sylvestris*) forest (*Vaccinio vitis-idaeo–Quercu–Pinetum*), Kloostrimetsa, Tallinn, N Estonia 59°28'15" N 024°52'56" E 07.08.2008 MR
- 811 *Lapsana communis* L. – roadside, Männiku, Tallinn, N Estonia 59°22'04" N 024°41'58" E 02.08.2007 MR
- 812 *Leontodon autumnalis* L. – roadside, Sarve, Hiiumaa Island, W Estonia 58°50'14" N 023°02'50" E 27.09.2008 MR
- 813 *Scorzonera humilis* L. – dry alvar grassland (*Trifolio montani–Filipenduletum vulgaris*), Aandu, Rapla county, NW Estonia 59°09'52" N 024°44'43" E 16.09.2007 UL
- 814 *Senecio jacobaea* L. – dry alvar grassland (*Trifolio montani–Filipenduletum vulgaris*), Jõelähtme, Harju county, N Estonia 59°26'13" N 025°08'41" E 22.08.2007 HR, MR
- 815 *Senecio jacobaea* L. – dry boreal grassland (*Festuco rubrae–Agrostietum capillaris*), Koitjärve, Harju county, N Estonia 59°24'29" N 025°36'17" E 10.08.2007 UL

- 816 *Senecio viscosus* L. – dry alvar grassland (*Trifolio montani–Filipenduletum vulgaris*), Jõelähtme, Harju county, N Estonia 59°26'17" N 025°08'50" E 22.08.2007 HR, MR
- 817 *Senecio viscosus* L. – waste land, Uuslinn, Tallinn, N Estonia 59°26'20" N 024°48'15" E 24.09.2007 MR, NA
- 818 *Solidago virgaurea* L. – dry boreal *Vaccinium vitis-idaea* pine (*Pinus sylvestris*) forest (*Vaccinio vitis-idaeo–Pinetum*), Kloostrimetsa, Tallinn, N Estonia 59°28'03" N 024°52'14" E 18.09.2007 MR
- 819 *Tanacetum vulgare* L. – floodplain alder (*Alnus incana*) forest (*Humulo–Alnetum incanae*), Kloostrimetsa, Tallinn, N Estonia 59°28'02" N 024°52'33" E 27.08.2007 MR
- 820 *Tanacetum vulgare* L. – roadside, Sarve, Hiiumaa Island, W Estonia 58°50'14" N 023°02'50" E 27.09.2008 MR
- 821 *Tragopogon pratensis* L. – fresh alvar *Calamagrostis* pine (*Pinus sylvestris*) forest (*Calamagrostio–Pinetum*), Aandu, Rapla county, NW Estonia 59°09'43" N 024°53'56" E 23.06.2007 UL
- 822 *Tragopogon pratensis* L. – poor paludified grassland (*Geranio palustris–Filipenduletum*), Kloostrimetsa, Tallinn, N Estonia 59°27'51" N 024°53'13" E 20.06.2007 MR, NA

Balsaminaceae

- 823 *Impatiens parviflora* DC. – arboretum, Kloostrimetsa, Tallinn, N Estonia 59°28'09" N 024°52'55" E 17.08.2007 MR, NA

Berberidaceae

- 824 *Berberis vulgaris* L. – dry alvar grassland (*Trifolio montani–Filipenduletum vulgaris*), Muuksi, Harju county, N Estonia 59°30'09" N 025°33'06" E 07.11.2007 MR
- 825 *Berberis vulgaris* L. – dry alvar *Calamagrostis* birch (*Betula pendula*) forest (*Calamagrostio–Betuletum*), Aruküla, Hiiumaa Island, W Estonia 58°51'34" N 023°02'16" E 29.10.2007 MR
- 826 *Berberis vulgaris* L. – waste land, Uuslinn, Tallinn, N Estonia 59°25'48" N 024°48'11" E 24.09.2007 MR, NA
- 827 *Berberis vulgaris* L. – fresh alvar (*Carici flaccaes–Seslerietum*) grassland with *Juniperus communis*, Sarve, Sarve Peninsula, Hiiumaa Island, W Estonia 58°50'53" N 023°01'53" E 27.08.2008 MR

Betulaceae

- 828 *Alnus glutinosa* (L.) Gaertn. – creekside, Keila-Joa, Harju county, NW Estonia 59°24'46" N 024°18'12" E 08.10.2008 MR
- 829 *Alnus incana* (L.) Moench – sandy seashore, Keila-Joa, Harju county, NW Estonia 59°24'44" N 024°18'06" E 08.10.2008 MR
- 830 *Betula pendula* Roth – fresh alvar (*Carici flaccaes–Seslerietum*) grassland with *Juniperus communis*, Sarve, Sarve Peninsula, Hiiumaa Island, W Estonia 58°50'53" N 023°01'53" E 27.09.2008 MR

Boraginaceae

- 831 *Anchusa officinalis* L. – roadside, Vääna-Jõesuu, Harju county, N Estonia 59°24'56" N 024°20'26" E 26.09.2007 MR, NA

- 832 *Echium vulgare* L. – waste land, Uuslinn, Tallinn, N Estonia 59°26'20" N 024°48'15" E 24.09.2007 MR, NA
- 833 *Myosotis arvensis* (L.) Hill – dry boreal grassland (*Deschampsietum flexuosae*), Kloostrimetsa, Tallinn, N Estonia 59°28'03" N 024°52'38" E 19.06.2007 MR
- 834 *Myosotis sylvatica* Hoffm. – fresh boreo-nemoral *Hepatica* oak–spruce (*Quercus robur–Picea abies*) forest (*Hepatico–Quercus–Piceetum*), Viidu, Saaremaa Island, W Estonia 58°17'52" N 022°06'07" E 12.06.2007 SJ, VK
- Brassicaceae**
- 835 *Alliaria petiolata* (M.Bieb.) Cavara et Grande – dry boreal *Vaccinium vitis-idaea* pine (*Pinus sylvestris*) forest (*Vaccinio vitis-idaeo–Pinetum*), Kloostrimetsa, Tallinn, N Estonia 59°28'17" N 024°52'38" E 08.08.2007 MR
- 836 *Berteroa incana* (L.) DC. – waste land, Pelgulinn, Tallinn, N Estonia 59°26'47" N 024°42'06" E 29.07.2007 MR
- 837 *Bunias orientalis* L. – dry alvar grassland (*Trifolium montani–Filipenduletum vulgaris*), Jõelähtme, Harju county, N Estonia 59°26'13" N 025°08'41" E 22.08.2007 HR, MR
- 838 *Bunias orientalis* L. – poor paludified grassland (*Geranio palustris–Filipenduletum*), Kloostrimetsa, Tallinn, N Estonia 59°27'51" N 024°53'13" E 31.08.2007 MR, NA
- 839 *Capsella bursa-pastoris* (L.) Medik. – arboretum, Kloostrimetsa, Tallinn, N Estonia 59°28'01" N 024°52'42" E 12.08.2007 M R
- 840 *Cardamine hirsuta* L. – naturalized, nursery, Kloostrimetsa, Tallinn, N Estonia 59°28'17" N 024°52'58" E 29.05.2007 SJ
- 841 *Descurainia sophia* (L.) Prantl – roadside, Kloostrimetsa, Tallinn, N Estonia 59°28'14" N 024°52'39" E 26.07.2007 OA
- 842 *Erophila verna* (L.) Chevall. – arboretum, Kloostrimetsa, Tallinn, N Estonia 59°28'17" N 024°52'58" E 12.08.2007 SJ, VK
- 843 *Erophila verna* (L.) Chevall. – arboretum, Kloostrimetsa, Tallinn, N Estonia 59°28'00" N 024°52'46" E 24.05.2007 MR
- 844 *Erucastrum gallicum* (Willd.) O.E.Schulz – streetside, Uuslinn, Tallinn, N Estonia 59°26'15" N 024°48'02" E 24.09.2007 M R, NA
- 845 *Lepidium ruderales* L. – pebbly seashore, Laoküla, NW Estonia 59°19'31" N 024°06'17" E 14.07.2007 SJ
- 846 *Rorippa islandica* (L.) Besser – roadside, Hiiu, Tallinn, N Estonia 59°22'10" N 024°41'38" E 02.08.2007 MR
- 847 *Sisymbrium loeselii* L. – roadside, Hiiu, Tallinn, N Estonia 59°22'13" N 024°41'08" E 02.08.2007 MR, HV
- 848 *Thlaspi arvense* L. – waste land, Kloostrimetsa, Tallinn, N Estonia 59°28'06" N 024°53'18" E 03.07.2007 MR
- 849 *Turritis glabra* L. – dry alvar grassland (*Trifolium montani–Filipenduletum vulgaris*), Loo, Harju county, N Estonia 59°26'49" N 024°56'08" E 22.08.2007 UL
- 850 *Turritis glabra* L. – dry boreal grassland (*Deschampsietum flexuosae*), Kloostrimetsa, Tallinn, N Estonia 59°28'13" N 024°52'50" E 27.07.2007 OA

Campanulaceae

- 851 *Campanula persicifolia* L. – dry boreal *Vaccinium vitis-idaea* pine (*Pinus sylvestris*) forest (*Vaccinio vitis-idaeo–Pinetum*), Kloostrimetsa, Tallinn, N Estonia 59°27'52" N 024°52'03" E 26.09.2007 O A
- 852 *Campanula rapunculoides* L. – arboretum, Kloostrimetsa, Tallinn, N Estonia 59°28'10" N 024°52'59" E 03.10.2008 MR

Cannabaceae

- 853 *Humulus lupulus* L. – streetside, Kloostrimetsa, Tallinn, N Estonia 59°28'03" N 024°52'18" E 18.08.2007 MR
- 854 *Humulus lupulus* L. – floodplain alder (*Alnus incana*) forest (*Humulo–Alnetum incanae*), Kloostrimetsa, Tallinn, N Estonia 59°27'53" N 024°53'11" E 23.09.2008 MR, NA

Caprifoliaceae

- 855 *Lonicera xylosteum* L. – dry boreal *Vaccinium vitis-idaea* pine (*Pinus sylvestris*) forest (*Vaccinio vitis-idaeo–Pinetum*), Kloostrimetsa, Tallinn, N Estonia 59°28'03" N 024°52'14" E 17.07.2007 M R
- 856 *Lonicera xylosteum* L. – fresh alvar *Calamagrostis* pine (*Pinus sylvestris*) forest (*Calamagrostio–Pinetum*), Lõetsa, Muhu Island, W Estonia 58°38'45" N 023°20'44" E 04.07.2007 OA
- 857 *Lonicera xylosteum* L. – fresh boreo-nemoral ash–elm (*Fraxinus excelsior–Ulmus glabra*) forest (*Lunario–Fraxino–Ulmetum*), Muuksi, Harju county, N Estonia 59°30'38" N 025°29'47" E 18.07.2007 M R
- 858 *Lonicera xylosteum* L. – arboretum, Kloostrimetsa, Tallinn, N Estonia 59°28'10" N 024°52'59" E 31.07.2008 MR
- 859 *Sambucus racemosa* L. – dry boreal *Vaccinium vitis-idaea* oak-pine (*Quercus robur–Pinus sylvestris*) forest (*Vaccinio vitis-idaeo–Quercu–Pinetum*), Kloostrimetsa, Tallinn, N Estonia 59°28'11" N 024°53'02" E 03.07.2007 MR, NA
- 860 *Viburnum opulus* L. – roadside, Sarve, Sarve Peninsula, Hiiumaa Island, W Estonia 58°50'59" N 023°03'13" E 29.10.2007 M R
- 861 *Viburnum opulus* L. – roadside, Anelema, Pärnu county, SW Estonia 58°37'39" N 024°33'11" E 09.09.2007 SJ

Caryophyllaceae

- 862 *Arenaria serpyllifolia* L. – dry boreal *Vaccinium vitis-idaea* oak-pine (*Quercus robur–Pinus sylvestris*) forest (*Vaccinio vitis-idaeo–Quercu–Pinetum*), Kloostrimetsa, Tallinn, N Estonia 59°28'14" N 024°52'45" E 27.07.2007 OA
- 863 *Arenaria serpyllifolia* L. – dry boreal grassland (*Deschampsietum flexuosae*), Kloostrimetsa, Tallinn, N Estonia 59°27'59" N 024°52'42" E 29.06.2007 MR
- 864 *Dianthus superbus* L. – dry alvar grassland (*Trifolio montani–Filipenduletum vulgaris*), Muraste, Harju county, N Estonia 59°27'45" N 024°27'54" E 07.11.2007 OA
- 865 *Honckenya peploides* (L.) Ehrh. – white dune (*Honckenyo–Leymetum*), Keila-Joa, Harju county, NW Estonia 59°24'44" N 024°18'05" E 26.09.2007 MR, NA

- 866 *Lychnis viscaria* L. – dry alvar grassland (*Trifolio montani–Filipenduletum vulgaris*), Muuksi, Harju county, N Estonia 59°30'31" N 024°30'36" E 18.08.2007 MR
- 867 *Lychnis viscaria* L. – roadside, Kloostrimetsa, Tallinn, N Estonia 59°28'14" N 024°52'39" E 10.07.2007 MR
- 868 *Saponaria officinalis* L. – naturalized, dry boreal *Vaccinium vitis-idaea* pine (*Pinus sylvestris*) forest (*Vaccinio vitis-idaeo–Pinetum*), Kloostrimetsa, Tallinn, N Estonia 59°28'15" N 024°52'42" E 27.08.2007 M R
- 869 *Saponaria officinalis* L. – waste land, Uuslinn, Tallinn, N Estonia 59°26'20" N 024°48'11" E 24.09.2007 MR, NA
- 870 *Silene alba* (Mill.) E.H.L.Krause – poor paludified grassland (*Geranio palustris–Filipenduletum*), Kloostrimetsa, Tallinn, N Estonia 59°27'52" N 024°53'12" E 31.08.2007 MR, NA
- 871 *Silene dioica* (L.) Clairv. – arboretum, Kloostrimetsa, Tallinn, N Estonia 59°28'07" N 024°52'58" E 29.09.2005 10.10.2007 MR
- 872 *Silene dioica* (L.) Clairv. – dry boreal *Vaccinium vitis-idaea* oak–pine (*Quercus robur–Pinus sylvestris*) forest (*Vaccinio vitis-idaeo–Quercu–Pinetum*), Kloostrimetsa, Tallinn, N Estonia 59°28'11" N 024°53'03" E 06.10.2008 MR
- 873 *Silene dioica* (L.) Clairv. – dry boreal *Vaccinium vitis-idaea* oak–pine (*Quercus robur–Pinus sylvestris*) forest (*Vaccinio vitis-idaeo–Quercu–Pinetum*), Kloostrimetsa, Tallinn, N Estonia 59°28'14" N 024°52'55" E 31.07.2008 MR
- 874 *Silene nutans* L. – dry alvar grassland (*Trifolio montani–Filipenduletum vulgaris*), Jõelähtme, Harju county, N Estonia 59°26'17" N 025°08'50" E 22.08.2007 TJ
- 875 *Silene nutans* L. – sandpit, Piusa, Põlva county, SO Estonia 57°5'0'38" N 027°27'59" E 21.09.2007 MR
- 876 *Silene vulgaris* (Moench) Garcke – dry boreo-nemoral grassland (*Agrostio capillaris–Trifolietum repentis*), Koogi, Harju county, N Estonia 59°26'59" N 025°10'40" E 06.10.2007 MR
- 877 *Silene vulgaris* (Moench) Garcke – dry alvar grassland (*Trifolio montani–Filipenduletum vulgaris*), Jõelähtme, Harju county, N Estonia 59°26'17" N 025°08'50" E 22.08.2008 MR
- 878 *Stellaria holostea* L. – fresh boreo-nemoral *Hepatica* oak–spruce (*Quercus robur–Picea abies*) forest (*Hepatico–Quercu–Piceetum*), Kakumäe, Tallinn, N Estonia 59°27'16" N 024°34'52" E 16.06.2007 O A

Chenopodiaceae

- 879 *Atriplex litoralis* L. – sandy seashore, Türisalu, Harju county, NW Estonia 59°25'02" N 024°18'46" E 26.09.2007 MR, NA
- 880 *Chenopodium album* L. – waste land, Kloostrimetsa, Tallinn, N Estonia 59°28'11" N 024°52'40" E 18.10.2007 MR

Cistaceae

- 881 *Helianthemum nummularium* (L.) Mill. non Grosser – dry alvar grassland (*Trifolio montani–Filipenduletum vulgaris*), Türisalu, Harju county, NW Estonia 59°25'05" N 024°18'59" E 26.09.2007 MR

- 882 *Helianthemum nummularium* (L.) Mill. non Grosser – dry alvar grassland (*Trifolio montani–Filipenduletum vulgaris*) with *Juniperus communis*, Türiõsalu, Harju county, NW Estonia 59°24'40" N 024°20'27" E 25.07.2007 MR
- 883 *Helianthemum nummularium* (L.) Mill. non Grosser – fresh alvar (*Carici flaccae–Seslerietum*) grassland with *Juniperus communis*, Sarve, Sarve Peninsula, Hiiumaa Island, W Estonia 58°51'00" N 023°03'08" E 26.09.2008 MR
- 884 *Helianthemum nummularium* (L.) Mill. non Grosser – dry alvar grassland (*Trifolio montani–Filipenduletum vulgaris*), Türiõsalu, Harju county, NW Estonia 59°25'14" N 024°19'48" E 08.10.2008 MR

Clusiaceae

- 885 *Hypericum perforatum* L. – dry alvar grassland (*Trifolio montani–Filipenduletum vulgaris*), Türiõsalu, Harju county, NW Estonia 59°25'14" N 024°19'48" E 08.10.2008 MR
- 886 *Hypericum perforatum* L. – abandoned field, Rae, Harju county, N Estonia 59°22'48" N 024°53'45" E 13.12.2007 OA, SJ
- 887 *Hypericum perforatum* L. – dry boreal grassland (*Festuco rubrae–Anthoxanthesetum*) Vãrska, Põlva county, SO Estonia 57°56'42" N 027°39'04" E 21.09.2007 MR
- 888 *Hypericum perforatum* L. – fresh boreo-nemoral grassland (*Festuco rubrae–Deschampsietum caespitosae*), Anelema, Pãrnu county, SW Estonia 58°37'50" N 024°34'22" E 09.09.2007 SJ

Convolvulaceae

- 889 *Calystegia sepium* (L.) R.Br. – floodplain alder (*Alnus incana*) forest (*Humulo–Alnetum incanae*), Kloostrimetsa, Tallinn, N Estonia 59°28'02" N 024°52'33" E 28.09.2007 MR
- 890 *Cuscuta europaea* L. – on *Paeonia*, Kloostrimetsa, Tallinn, N Estonia 59°28'08" N 024°52'47" E 17.09.2007 OA

Cornaceae

- 891 *Cornus sanguinea* L. – fresh alvar (*Carici flaccae–Seslerietum*) grassland with *Juniperus communis*, Sarve, Sarve Peninsula, Hiiumaa Island, W Estonia 58°50'53" N 023°01'53" E 27.09.2008 MR
- 892 *Cornus sanguinea* L. – fresh alvar grassland (*Carici flaccae–Seslerietum*) with *Juniperus communis*, Sarve, Sarve Peninsula, Hiiumaa Island, W Estonia 58°50'27" N 023°02'20" E 29.10.2007 MR
- 893 *Cornus suecica* L. – fresh boreal grassland (*Potentillo erectae–Deschampsietum caespitosae*), Rammu, Rammu Island, N Estonia 59°34'22" N 025°13'20" E 21.08.2008 JE

Empetraceae

- 894 *Empetrum hermaphroditum* Hagerup – gray dune (*Galio veri–Thymetum*), Idaotsa, Prangli Island, N Estonia 59°37'22" N 025°01'52" E 22.08.2008 AK
- 895 *Empetrum nigrum* L. – obrotrophic bog pine (*Pinus sylvestris*) forest (*Sphagno–Pinetum*), Anelema, Pãrnu county, SW Estonia 58°37'50" N 024°34'52" E 09.09.2007 SJ

896 *Empetrum nigrum* L. – brown dune (*Empetretum nigrum*), Rammu, Rammu Island, N Estonia 59°34'20" N 025°13'12" E 21.0 8.2008 JE

Ericaceae

897 *Arctostaphylos uva-ursi* (L.) Spreng. – dry boreal *Vaccinium vitis-idaea* pine (*Pinus sylvestris*) forest (*Vaccinio vitis-idaeo–Pinetum*), Hiiu, Tallinn, N Estonia 59°22'16" N 024°41'23" E 02.08.2007 MR

898 *Monotropa hypopitys* L. – fresh alvar *Calamagrostis spruce* (*Picea abies*) forest (*Calamagrostio–Piceetum*), Aandu, Rapla county, NW Estonia 59°09'27" N 024°44'10" E 24.09.2007 UL

899 *Vaccinium myrtillus* L. – dry boreal *Vaccinium myrtillus* pine (*Pinus sylvestris*) forest (*Vaccinio myrtilli–Pinetum*), Idaotsa, Prangli Island, N Estonia 59°37'42" N 025°01'00" E 07.09.2007 MR

900 *Vaccinium myrtillus* L. – dry boreal *Vaccinium vitis-idaea* pine (*Pinus sylvestris*) forest (*Vaccinio vitis-idaeo–Pinetum*), Vääna-Jõesuu, Harju county, NW Estonia 59°25'52" N 024°21'40" E 08.10.2008 MR

901 *Vaccinium myrtillus* L. – dry boreal *Vaccinium myrtillus* pine (*Pinus sylvestris*) forest (*Vaccinio myrtilli–Pinetum*), Kloostrimetsa, Tallinn, N Estonia 59°28'17" N 024°51'55" E 03.07.2007 MR, NA

902 *Vaccinium myrtillus* L. – dry boreal *Vaccinium myrtillus* pine (*Pinus sylvestris*) forest (*Vaccinio myrtilli–Pinetum*), Kloostrimetsa, Tallinn, N Estonia 59°28'04" N 024°53'36" E 27.08.2008 AR

903 *Vaccinium oxycoccos* L. – transitional bog pine (*Pinus sylvestris*) forest, Nedsaja, Põlva county, SO Estonia 57°53'54" N 027°38'29" E 21.09.2007 MR

904 *Vaccinium uliginosum* L. – obrotrophic bog pine (*Pinus sylvestris*) forest (*Sphagno–Pinetum*), Anelema, Pärnu county, SW Estonia 58°37'48" N 024°34'50" E 09.09.2007 SJ

905 *Vaccinium vitis-idaea* L. – dry boreal *Vaccinium vitis-idaea* pine (*Pinus sylvestris*) forest (*Vaccinio vitis-idaeo–Pinetum*), Vääna-Jõesuu, Harju county, NW Estonia 59°25'52" N 024°21'40" E 08.10.2008 MR

906 *Vaccinium vitis-idaea* L. – transitional bog pine (*Pinus sylvestris*) forest, Nedsaja, Põlva county, SO Estonia 57°53'54" N 027°38'29" E 21.09.2007 MR

907 *Vaccinium vitis-idaea* L. – dry boreal *Vaccinium vitis-idaea* pine (*Pinus sylvestris*) forest (*Vaccinio vitis-idaeo–Pinetum*), Vääna-Jõesuu, Harju county, N Estonia 59°25'30" N 024°20'39" E 26.09.2007 M T, NA

Fabaceae

908 *Anthyllis vulneraria* L. – dry boreal *Vaccinium vitis-idaea* pine (*Pinus sylvestris*) forest (*Vaccinio vitis-idaeo–Pinetum*), Hiiu, Tallinn, N Estonia 59°22'15" N 024°41'17" E 02.08.2007 MR

909 *Lathyrus linifolius* (Reichard) Bässler – dry boreal *Vaccinium vitis-idaea* pine (*Pinus sylvestris*) forest (*Vaccinio vitis-idaeo–Pinetum*), Hiiu, Tallinn, N Estonia 59°22'48" N 024°40'57" E 21.07.2007 OA

910 *Lathyrus palustris* L. – roadside, Hiiu, Tallinn, N Estonia 59°22'10" N 024°41'38" E 02.08.2007 OA, HV

- 911 *Lathyrus vernus* (L.) Bernh. – fresh boreo-nemoral *Hepatica* oak–spruce (*Quercus robur*–*Picea abies*) forest (*Hepatico*–*Quercu*–*Piceetum*), Kakumäe, Tallinn, N Estonia 59°27'16" N 024°34'52" E 16. 06.2007 OA
- 912 *Lotus callunetorum* (Üksip) Miniaev – dry boreal *Vaccinium vitis-idaea* pine (*Pinus sylvestris*) forest (*Vaccinio vitis-idaeo*–*Pinetum*), Hiiu, Tallinn, N Estonia 59°22'14" N 024°41'15" E 02.08.2007 OA
- 913 *Lotus corniculatus* L. – dry alvar grassland (*Trifolio montani*–*Filipenduletum vulgaris*), Aandu, Rapla county, NW Estonia 59°09'52" N 024°44'43" E 17.09.2007 UL
- 914 *Medicago falcata* L. – fresh alvar (*Carici flacca*–*Seslerietum*) grassland with *Juniperus communis*, Sarve, Sarve Peninsula, Hiiumaa Island, W Estonia 58°50'53" N 023°01'53" E 27.09.2008 MR
- 915 *Medicago lupulina* L. – roadside, Kloostrimetsa, Tallinn, N Estonia 59°28'14" N 024°52'39" E 31.08.2007 MR, NA
- 916 *Medicago sativa* L. – fresh alvar (*Carici flacca*–*Seslerietum*) grassland with *Juniperus communis*, Sarve, Sarve Peninsula, Hiiumaa Island, W Estonia 58°50'53" N 023°01'53" E 27.09.2008 MR
- 917 *Melilotus albus* Medik. – sandpit, Piusa, Põlva county, SO Estonia 57°50'38" N 027°27'59" E 21.09.2007 MR
- 918 *Melilotus officinalis* (L.) Lam. – waste land, Uuslinn, Tallinn, N Estonia 59°26'07" N 024°47'57" E 24.09.2007 MR
- 919 *Oxytropis campestris* (L.) DC. – roadside, Koitjärve, Harju county, N Estonia 59°24'26" N 025°36'00" E 10.08.2007 RA
- 920 *Trifolium arvense* L. – dry boreal *Vaccinium vitis-idaea* pine (*Pinus sylvestris*) forest (*Vaccinio vitis-idaeo*–*Pinetum*), Hiiu, Tallinn, N Estonia 59°22'16" N 024°41'24" E 02.08.2007 MR, HV
- 921 *Trifolium arvense* L. – dry boreal grassland (*Deschampsietum flexuosae*), Kloostrimetsa, Tallinn, N Estonia 59°28'13" N 024°52'50" E 27.08.2007 MR
- 922 *Trifolium hybridum* L. – abandoned field, Sausti, Harju county, N Estonia 59°18'42" N 024°44'28" E 12.08.2007 OA
- 923 *Trifolium repens* L. – roadside, Hiiu, Tallinn, N Estonia 59°22'12" N 024°41'06" E 02.08.2007 OA, HV
- 924 *Vicia angustifolia* L. – dry boreal grassland (*Deschampsietum flexuosae*), Kloostrimetsa, Tallinn, N Estonia 59°28'02" N 024°52'34" E 13.07.2007 MR
- 925 *Vicia cracca* L. – dry boreal grassland (*Deschampsietum flexuosae*), Kloostrimetsa, Tallinn, N Estonia 59°28'02" N 024°52'40" E 13.07.2007 MR
- 926 *Vicia hirsuta* (L.) Gray – dry boreal *Vaccinium vitis-idaea* pine (*Pinus sylvestris*) forest (*Vaccinio vitis-idaeo*–*Pinetum*), Hiiu, Tallinn, N Estonia 59°22'16" N 024°41'23" E 02.08.2007 OA
- 927 *Vicia lathyroides* L. – dry boreal *Vaccinium vitis-idaea* pine (*Pinus sylvestris*) forest (*Vaccinio vitis-idaeo*–*Pinetum*), Kloostrimetsa, Tallinn, N Estonia 59°28'15" N 024°52'42" E 27.07.2007 OA, MR
- 928 *Vicia tetrasperma* (L.) Schreb. – dry boreal grassland (*Festuco rubrae*–*Agrostietum capillaris*), Aegna Island, N Estonia 59°34'59" N 024°45'59" E 25.06.2007 OA, MR

- 929 *Vicia tetrasperma* (L.) Schreb. – dry boreal grassland (*Deschampsietum flexuosae*), Naage, Harju county, N Estonia 59°23'59" N 024° 23'11" E 25.06.2007 KK, MR

Fumariaceae

- 930 *Corydalis solida* (L.) Clairv. – dry boreal *Vaccinium vitis-idaea* oak–pine (*Quercus robur–Pinus sylvestris*) forest (*Vaccinio vitis-idaeo–Quercus–Pinetum*), Kloostrimetsa, Tallinn, N Estonia 59°28'11" N 024°52'57" E 18.05.2007 MR
- 931 *Corydalis solida* (L.) Clairv. – dry boreal grassland (*Festuco rubrae–Agrostietum capillaris*), Kloostrimetsa, Tallinn, N Estonia 59°28'14" N 024°53'04" E 18.05.2007 MR
- 932 *Corydalis solida* (L.) Clairv. – dry boreal grassland (*Festuco rubrae–Agrostietum capillaris*), Kloostrimetsa, Tallinn, N Estonia 59°28'04" N 024°52'47" E 15.05.2007 MR

Geraniaceae

- 933 *Geranium molle* L. – roadside, Kloostrimetsa, Tallinn, N Estonia 59°28'14" N 024°52'40" E 26.06.2008 MR
- 934 *Geranium pratense* L. – floodplain alder (*Alnus incana*) forest (*Humulo–Alnetum incanae*), Kloostrimetsa, Tallinn, N Estonia 59°27'57" N 024°52'43" E 07.08.2008 MR

Grossulariaceae

- 935 *Ribes alpinum* L. – arboretum, Kloostrimetsa, Tallinn, N Estonia 59°28'10" N 024°52'59" E 31.07.2008 MR
- 936 *Ribes alpinum* L. – dry boreal *Vaccinium vitis-idaea* pine (*Pinus sylvestris*) forest (*Vaccinio vitis-idaeo–Pinetum*), Kloostrimetsa, Tallinn, N Estonia 59°28'03" N 024°52'14" E 17.07.2007 MR

Lamiaceae

- 937 *Acinos arvensis* (Lam.) Dandy – roadside, Kloostrimetsa, Tallinn, N Estonia 59°28'15" N 024°52'43" E 13.08.2008 MR
- 938 *Acinos arvensis* (Lam.) Dandy – dry alvar grassland (*Trifolio montani–Filipenduletum vulgaris*), Jõelähtme, Harju county, N Estonia 59°26'17" N 025°08'50" E 22.08.2007 MR
- 939 *Clinopodium vulgare* L. – dry alvar grassland (*Trifolio montani–Filipenduletum vulgaris*), Aandu, Rapla county, NW Estonia 59°09'52" N 024°44'43" E 07.09.2007 UL
- 940 *Origanum vulgare* L. – fresh boreo-nemoral grassland (*Festuco rubrae–Deschampsietum caespitosae*), Anelema, Pärnu county, SW Estonia 58°37'50" N 024°34'22" E 09.09.2007 SJ
- 941 *Prunella vulgaris* L. – dry boreal *Vaccinium vitis-idaea* oak–pine (*Quercus robur–Pinus sylvestris*) forest (*Vaccinio vitis-idaeo–Quercus–Pinetum*), Kloostrimetsa, Tallinn, N Estonia 59°28'10" N 024°53'02" E 14.08.2008 MR
- 942 *Stachys sylvatica* L. – fresh boreo-nemoral ash–elm (*Fraxinus excelsior–Ulmus glabra*) forest (*Lunario–Fraxino–Ulmetum*), Haabneeme, Harju county, N Estonia 59°30'29" N 024°50'14" E 10.11.2007 O A

Lythraceae

- 943 *Lythrum salicaria* L. – arboretum, Kloostrimetsa, Tallinn, N Estonia
59°28'06" N 024°52'54" E 07.11.2008 MR
- 944 *Lythrum salicaria* L. – ditch, Kloostrimetsa, Tallinn, N Estonia 59°28'06" N
024°53'18" E 27.09.2007 MS

Malvaceae

- 945 *Malva moschata* L. – naturalized, wall of cemetery, Lääneotsa, Prangli Island,
N Estonia 59°37'08" N 024°59'56" E 07.09.2007 M R

Oleaceae

- 946 *Fraxinus excelsior* L. – fresh boreo-nemoral ash–elm (*Fraxinus excelsior*–
Ulmus glabra) forest (*Lunario–Fraxino–Ulmetum*), Kadriorg, Tallinn, N Estonia
59°26'15" N 024°47'51" E 24.09.2007 MR, NA
- 947 *Fraxinus excelsior* L. – dry alvar grassland (*Trifolium montani–Filipenduletum*
vulgaris) with *Juniperus communis* and *Pinus sylvestris*, Türisalu, Harju county,
NW Estonia 59°24'52" N 024°18'57" E 26.09.2007 MR, NA

Onagraceae

- 948 *Epilobium montanum* L. – alder (*Alnus glutinosa*) swamp forest, Koitjärve,
Harju county, N Estonia 59°24'31" N 025°36'20" E 10.08.2007 UL
- 949 *Oenothera biennis* L. – sandpit, Piusa, Põlva county, SO Estonia 57°50'38" N
027°27'59" E 21.09.2007 VK, MR

Oxalidaceae

- 950 *Oxalis acetosella* L. – fresh boreo-nemoral *Hepatica* oak–spruce (*Quercus*
robur–Picea abies) forest (*Hepatico–Quercu–Piceetum*), Kakumäe, Tallinn,
N Estonia 59°27'16" N 024°34'52" E 16.06.2007 O A

Papaveraceae

- 951 *Chelidonium majus* L. – roadside, Kloostrimetsa, Tallinn, N Estonia
59°28'14" N 024°52'40" E 27.06.2008 MR
- 952 *Chelidonium majus* L. – roadside, Kohila, Rapla county, NW Estonia
59°09'38" N 024°45'11" E 23.06.2007 UL
- 953 *Chelidonium majus* L. – roadside, Kloostrimetsa, Tallinn, N Estonia
59°28'14" N 024°52'39" E 21.06.2007 MR

Plantaginaceae

- 954 *Plantago major* L. – roadside, Kloostrimetsa, Tallinn, N Estonia 59°27'53" N
024°53'10" E 31.08.2007 MR, NA
- 955 *Plantago major* L. – roadside, Kloostrimetsa, Tallinn, N Estonia 59°27'53" N
024°53'09" E 23.09.2008 MR
- 956 *Plantago media* L. – streetside, Uuslinn, Tallinn, N Estonia 59°26'13" N
024°47'57" E 24.09.2007 MR

Polygonaceae

- 957 *Fallopia dumetorum* (L.) Holub – dry alvar grassland (*Trifolium montani*–
Filipenduletum vulgaris) with *Juniperus communis* and *Pinus sylvestris*,
Türisalu, Harju county, NW Estonia 59°25'03" N 024°18'59" E
26.09.2007 MR, NA

- 958 *Rumex acetosella* L. var. *tenuifolius* Wallr. – dry boreal grassland (*Deschampsietum flexuosae*), Kloostrimetsa, Tallinn, N Estonia 59°28'13" N 024°52'50" E 27.08.2007 MR
- 959 *Rumex crispus* L. – streetside, Kloostrimetsa, Tallinn, N Estonia 59°28'12" N 024°52'30" E 31.08.2007 MR
- 960 *Rumex crispus* L. – dry alvar grassland (*Trifolio montani–Filipenduletum vulgaris*), Jõelähtme, Harju county, N Estonia 59°26'17" N 025°08'50" E 22.08.2007 MR
- 961 *Rumex longifolius* DC. – arboretum, Kloostrimetsa, Tallinn, N Estonia 59°28'07" N 024°52'58" E 13.11.2007 MR
- 962 *Rumex longifolius* DC. – streetside, Kloostrimetsa, Tallinn, N Estonia 59°28'02" N 024°52'16" E 17.07.2007 MR
- 963 *Rumex obtusifolius* L. – dry boreal *Vaccinium vitis-idaea* oak-pine (*Quercus robur–Pinus sylvestris*) forest (*Vaccinio vitis-idaeo–Quercu–Pinetum*), Kloostrimetsa, Tallinn, N Estonia 59°28'14" N 024°52'45" E 27.08.2007 MR
- 964 *Rumex thyrsoiflorus* Fingerh. – dry boreal grassland (*Festuco rubrae–Agrostietum capillaris*), Koitjärve, Harju county, N Estonia 59°24'29" N 025°36'19" E 10.08.2007 MR

Primulaceae

- 965 *Androsace septentrionalis* L. – dry alvar grassland (*Trifolio montani–Filipenduletum vulgaris*), Naage, Harju county, NW Estonia 59°23'59" N 024°23'08" E 25.07.2007 SJ
- 966 *Androsace septentrionalis* L. – pebbly seashore, Laoküla, NW Estonia 59°19'31" N 024°06'17" E 14.07.2007 SJ
- 967 *Primula veris* L. – dry alvar *Calamagrostis* birch (*Betula pendula*) forest (*Calamagrostio–Betuletum*), Heltermaa, Hiiumaa Island, W Estonia 58°51'21" N 023°02'52" E 26.09.2008 MR
- 968 *Primula veris* L. – fresh alvar grassland (*Carici flaccaae–Seslerietum*) with *Juniperus communis*, Sarve, Sarve Peninsula, Hiiumaa Island, W Estonia 58°50'27" N 023°02'20" E 29.10.2007 MR

Pyrolaceae

- 969 *Moneses uniflora* (L.) A.Gray – drained peatland *Vaccinium myrtillus* pine (*Pinus sylvestris*) forest (*Vaccinio myrtilli–Pinetum*), Hiiu, Tallinn, N Estonia 59°22'08" N 024°41'39" E 02.08.2007 TN
- 970 *Orthilia secunda* (L.) House – roadside, Männiku, Tallinn, N Estonia 59°22'08" N 024°42'30" E 02.08.2007 MR
- 971 *Orthilia secunda* (L.) House – drained peatland *Vaccinium myrtillus* pine (*Pinus sylvestris*) forest (*Vaccinio myrtilli–Pinetum*), Kakumäe, Tallinn, N Estonia 59°25'51" N 024°38'12" E 29.07.2007 O A
- 972 *Pyrola media* Sw. – drained peatland *Vaccinium myrtillus* pine (*Pinus sylvestris*) forest (*Vaccinio myrtilli–Pinetum*), Kakumäe, Tallinn, N Estonia 59°25'50" N 024°38'11" E 29.07.2007 SJÄ
- 973 *Pyrola rotundifolia* L. – drained peatland *Vaccinium myrtillus* pine (*Pinus sylvestris*) forest (*Vaccinio myrtilli–Pinetum*), Kakumäe, Tallinn, N Estonia 59°25'50" N 024°38'11" E 29.07.2007 SJÄ

Ranunculaceae

- 974 *Actaea spicata* L. – fresh boreo-nemoral ash–elm (*Fraxinus excelsior–Ulmus glabra*) forest (*Lunario–Fraxino–Ulmetum*), Muuksi, Harju county, N Estonia 59°30'38" N 025°29'51" E 18.07.2007 SJ
- 975 *Actaea spicata* L. – fresh alvar *Calamagrostis* pine (*Pinus sylvestris*) forest (*Calamagrostio–Pinetum*), Aandu, Rapla county, NW Estonia 59°09'42" N 024°44'56" E 01.08.2007 UL
- 976 *Actaea spicata* L. – fresh boreo-nemoral *Hepatica* spruce (*Picea abies*) forest (*Hepatico–Piceetum*), Uuri, Harju county, N Estonia 59°30'16" N 025°3 6'20" E 07.11.2007 SJ
- 977 *Actaea spicata* L. – arboretum, Kloostrimetsa, Tallinn, N Estonia 59°28'10" N 024°52'59" E 06.10.2008 MR
- 978 *Anemone nemorosa* L. – fresh boreo-nemoral *Hepatica* oak–spruce (*Quercus robur–Picea abies*) forest (*Hepatico–Quercu–Piceetum*), Kakumäe, Tallinn, N Estonia 59°27'16" N 024°34'52" E 16.06.2007 O A
- 979 *Anemone sylvestris* L. – dry alvar grassland (*Trifolio montani–Filipenduletum vulgaris*) with *Juniperus communis*, Türisalu, Harju county, NW Estonia 59°24'40" N 024°20'27" E 25.07.2007 MR
- 980 *Anemone sylvestris* L. – fresh boreo-nemoral ash–elm (*Fraxinus excelsior–Ulmus glabra*) forest (*Lunario–Fraxino–Ulmetum*), Muuksi, Harju county, N Estonia 59°30'38" N 025°29'47" E 18.08.2007 K K
- 981 *Caltha palustris* L. – riverside, Pirita River, Kloostrimetsa, Tallinn, N Estonia 59°27'55" N 024°53'05" E 28.06.2007 MR
- 982 *Pulsatilla pratensis* (L.) Mill. – roadside, Viidu, Saaremaa Island, W Estonia 58°17'07" N 022°08'10" E 12.06.2007 SJ
- 983 *Pulsatilla pratensis* (L.) Mill. – dry boreal grassland (*Deschampsietum flexuosae*), Kloostrimetsa, Tallinn, N Estonia 59°28'13" N 0 24°52'50" E 28.06.2007 MR
- 984 *Ranunculus polyanthemos* L. – dry alvar grassland (*Trifolio montani–Filipenduletum vulgaris*), Muuksi, Harju county, N Estonia 59°30'31" N 024°30'36" E 18.08.2007 MR
- 985 *Ranunculus polyanthemos* L. – dry alvar grassland (*Trifolio montani–Filipenduletum vulgaris*), Naage, Harju county, NW Estonia 59°23'59" N 024°23'08" E 25.07.2007 MR
- 986 *Ranunculus polyanthemos* L. – dry boreal *Vaccinium vitis-idaea* pine (*Pinus sylvestris*) forest (*Vaccinio vitis-idaeo–Pinetum*), Kloostrimetsa, Tallinn, N Estonia 59°27'41" N 024°51'52" E 20.10.2007 M R
- 987 *Thalictrum flavum* L. – dry alvar grassland (*Trifolio montani–Filipenduletum vulgaris*), Aandu, Rapla county, NW Estonia 59°09'52" N 024 °44'43" E 25.09.2007 UL

Resedaceae

- 988 *Reseda lutea* L. – on ash of oil shale, Järve, Kohta-Järve, Ida-Viru county, NO Estonia 59°23'56" N 027°13'16" E 18.09.2008 MR

Rhamnaceae

- 989 *Frangula alnus* Mill. – dry boreal *Vaccinium vitis-idaea* pine (*Pinus sylvestris*) forest (*Vaccinio vitis-idaeo–Pinetum*), Kloostrimetsa, Tallinn, N Estonia 59°28'45" N 024°52'09" E 16.12.2008 OA
- 990 *Frangula alnus* Mill. – fresh alvar *Calamagrostis pine* (*Pinus sylvestris*) forest (*Calamagrostio–Pinetum*), Aandu, Rapla county, NW Estonia 59°09'36" N 024°45'06" E 01.08.2007 UL
- 991 *Frangula alnus* Mill. – roadside, Lutepää, Põlva county, SO Estonia 57°55'06" N 027°39'21" E 21.09.2007 MR
- 992 *Rhamnus cathartica* L. – dry alvar grassland (*Trifolio montani–Filipenduletum vulgaris*) with *Juniperus communis* and *Pinus sylvestris*, Türisalu, Harju county, NW Estonia 59°24'49" N 024°18'32" E 26.09.2007 MR, NA
- 993 *Rhamnus cathartica* L. – dry alvar *Calamagrostis* birch (*Betula pendula*) forest (*Calamagrostio–Betuletum*), Heltermaa, Hiiumaa Island, W Estonia 58°51'21" N 023°02'52" E 26.09.2008 MR

Rosaceae

- 994 *Agrimonia eupatoria* L. – roadside, Sarve, Sarve Peninsula, Hiiumaa Island, W Estonia 58°50'59" N 023°03'13" E 29.10.2007 M R29.10.2007 MR
- 995 *Agrimonia eupatoria* L. – fresh alvar *Calamagrostis pine* (*Pinus sylvestris*) forest (*Calamagrostio–Pinetum*), Aandu, Rapla county, NW Estonia 59°09'35" N 024°44'48" E 17.09.2007 UL
- 996 *Aruncus dioicus* (Walter) Fernald – naturalized, Velise Park, Velisemõisa, Rapla county, W Estonia 58°46'27" N 024°28'07" E 25.10.2007 MR
- 997 *Crataegus monogyna* Jacq. – fresh boreo-nemoral ash (*Fraxinus excelsior*) forest (*Lunario–Fraxinetum*), Vääna-Jõesuu, Harju county, N Estonia 59°24'55" N 024°20'26" E 26.09.2007 MR, NA
- 998 *Crataegus rhipidophylla* Gand. – roadside, Sarve, Sarve Peninsula, Hiiumaa Island, W Estonia 58°51'04" N 023°03'08" E 29.10.2007 MR
- 999 *Fragaria vesca* L. – dry boreal *Vaccinium vitis-idaea* pine (*Pinus sylvestris*) forest (*Vaccinio vitis-idaeo–Pinetum*), Kloostrimetsa, Tallinn, N Estonia 59°28'13" N 024°52'36" E 16.07.2007 MR
- 1000 *Fragaria vesca* L. – dry boreal *Vaccinium vitis-idaea* pine (*Pinus sylvestris*) forest (*Vaccinio vitis-idaeo–Pinetum*), Kloostrimetsa, Tallinn, N Estonia 59°28'16" N 024°52'37" E 17.07.2008 MR
- 1001 *Fragaria vesca* L. – dry boreal *Vaccinium vitis-idaea* pine (*Pinus sylvestris*) forest (*Vaccinio vitis-idaeo–Pinetum*), Meremõisa, Harju county, NW Estonia 59°23'53" N 024°15'52" E 25.07.2007 MR
- 1002 *Fragaria vesca* L. – roadside, Kloostrimetsa, Tallinn, N Estonia 59°28'28" N 024°52'05" E 03.07.2007 MR, NA
- 1003 *Fragaria viridis* Weston – dry alvar grassland (*Trifolio montani–Filipenduletum vulgaris*), Muuksi, Harju county, N Estonia 59°30'31" N 024°30'36" E 18.08.2007 SJ, MR
- 1004 *Fragaria viridis* Weston – dry alvar grassland (*Trifolio montani–Filipenduletum vulgaris*), Naage, Harju county, NW Estonia 59°23'59" N 024°23'08" E 25.07.2007 SJ

- 1005 *Geum urbanum* L. – dry boreal *Vaccinium vitis-idaea* oak-pine (*Quercus robur*–*Pinus sylvestris*) forest (*Vaccinio vitis-idaeo*–*Quercu*–*Pinetum*), Kloostrimetsa, Tallinn, N Estonia 59°28'14" N 024°52'47" E 17.08.2007 MR
- 1006 *Padus avium* Mill. – floodplain alder (*Alnus incana*) forest (*Humulo*–*Alnetum incanae*), Kloostrimetsa, Tallinn, N Estonia 59°28'00" N 024°52'53" E 23.07.2007 MR
- 1007 *Padus avium* Mill. – floodplain alder (*Alnus incana*) forest (*Humulo*–*Alnetum incanae*), Kloostrimetsa, Tallinn, N Estonia 59°27'58" N 024°52'43" E 07.08.2008 MR
- 1008 *Potentilla argentea* L. – wall of cemetery, Lääneotsa, Prangli Island, N Estonia 59°37'08" N 024°59'56" E 07.09.2007 MR
- 1009 *Potentilla argentea* L. – road, Koitjärve, Harju county, N Estonia 59°24'26" N 025°36'00" E 10.08.2007 MR
- 1010 *Potentilla argentea* L. – dry boreal grassland (*Deschampsietum flexuosae*), Kloostrimetsa, Tallinn, N Estonia 59°28'13" N 024°52'50" E 27.08.2007 MR
- 1011 *Potentilla fruticosa* L. – fresh alvar grassland (*Seslerio*–*Potentilletum fruticosae*), Türisalu, Harju county, NW Estonia 59°25'10" N 024°19'12" E 08.10.2008 MR
- 1012 *Potentilla fruticosa* L. – fresh alvar grassland (*Seslerio*–*Potentilletum fruticosae*), Türisalu, Harju county, NW Estonia 59°25'10" N 024°19'27" E 26.09.2007 MR, NA
- 1013 *Rosa glabrifolia* C.A.Mey. ex Rupr. – waste land, Uuslinn, Tallinn, N Estonia 59°26'22" N 024°48'15" E 24.09.2007 MR
- 1014 *Rosa majalis* Herrm. – dry alvar grassland (*Trifolio montani*–*Filipenduletum vulgaris*) with *Juniperus communis*, Türisalu, Harju county, NW Estonia 59°24'42" N 024°20'28" E 26.09.2007 MR, NA
- 1015 *Rosa majalis* Herrm. – dry alvar grassland (*Trifolio montani*–*Filipenduletum vulgaris*), Jõelähtme, Harju county, N Estonia 59°26'19" N 025°08'18" E 22.08.2007 MR
- 1016 *Rosa mollis* Sm. – roadside, Vääna-Jõesuu, Harju county, N Estonia 59°24'56" N 024°20'26" E 26.09.2007 MR, NA
- 1017 *Rosa mollis* Sm. – dry alvar grassland (*Trifolio montani*–*Filipenduletum vulgaris*), Türisalu, Harju county, NW Estonia 59°25'14" N 024°19'48" E 08.10.2008 MR
- 1018 *Rosa rugosa* Thunb. f. *alba* Rehder – naturalized, gray dune (*Galio veri*–*Thymetum*), Kelnase, Prangli Island, N Estonia 59°38'11" N 024°59'11" E 22.08.2008 AK
- 1019 *Rosa subcanina* (Christ) Dalla Torre et Sarnth. – dry alvar *Calamagrostis* birch (*Betula pendula*) forest (*Calamagrostio*–*Betuletum*), Aruküla, Hiiumaa Island, W Estonia 58°51'34" N 023°02'16" E 28.10.2007 M R
- 1020 *Rosa subcanina* (Christ) Dalla Torre et Sarnth. – dry alvar grassland (*Trifolio montani*–*Filipenduletum vulgaris*), Lubja, Harju county, N Estonia 59°30'56" N 024°50'25" E 16.11.2007 OA
- 1021 *Rosa subcanina* (Christ) Dalla Torre et Sarnth. – dry alvar *Calamagrostis* birch (*Betula pendula*) forest (*Calamagrostio*–*Betuletum*), Heltermaa, Hiiumaa Island, W Estonia 58°51'21" N 023°02'52" E 27.09.2008 M R

- 1022 *Rubus caesius* L. – dry alvar grassland (*Trifolium montani*–*Filipenduletum vulgaris*), Jõelähtme, Harju county, N Estonia 59°26'19" N 025°08'18" E 22.08.2007 MR
- 1023 *Rubus chamaemorus* L. – transitional bog pine (*Pinus sylvestris*) forest, Kiruvere, Harju county, N Estonia 59°08'26" N 025°24'25" E 18.07.2007 IM
- 1024 *Rubus idaeus* L. – arboretum, Kloostrimetsa, Tallinn, N Estonia 59°28'09" N 024°52'46" E 30.07.2007 MR
- 1025 *Rubus idaeus* L. – floodplain alder (*Alnus incana*) forest (*Humulo*–*Alnetum incanae*), Kloostrimetsa, Tallinn, N Estonia 59°28'00" N 024°52'53" E 23.07.2007 MR
- 1026 *Rubus idaeus* L. – roadside, Anelema, Pärnu county, SW Estonia 58°37'39" N 024°33'12" E 09.09.2007 SJ
- 1027 *Rubus idaeus* L. – arboretum, Kloostrimetsa, Tallinn, N Estonia 59°28'11" N 024°52'59" E 31.07.2008 MR
- 1028 *Rubus saxatilis* L. – dry alvar *Calamagrostis* birch (*Betula pendula*) forest (*Calamagrostio*–*Betuletum*), Heltermaa, Hiiumaa Island, W Estonia 58°51'34" N 023°02'16" E 26.09.2008 MR
- 1029 *Rubus saxatilis* L. – fresh alvar *Calamagrostis* pine (*Pinus sylvestris*) forest (*Calamagrostio*–*Pinetum*), Aandu, Rapla county, NW Estonia 59°09'35" N 024°44'48" E 25.07.2007 UL
- 1030 *Rubus saxatilis* L. – dry boreal *Vaccinium vitis-idaea* oak–pine (*Quercus robur*–*Pinus sylvestris*) forest (*Vaccinio vitis-idaeo*–*Quercus*–*Pinetum*), Kloostrimetsa, Tallinn, N Estonia 59°28'13" N 024°53'05" E 30.07.2007 MR
- 1031 *Sorbus aucuparia* L. – dry alvar grassland (*Trifolium montani*–*Filipenduletum vulgaris*) with *Juniperus communis* and *Pinus sylvestris*, Türisalu, Harju county, NW Estonia 59°25'14" N 024°19'48" E 08.10.2008 MR
- 1032 *Sorbus aucuparia* L. ssp. *moravica* (Zengerl) A.Löve – roadside, Rammu, Rammu Island, N Estonia 59°34'25" N 025°13'13" E 21.08.2008 JE
- 1033 *Sorbus aucuparia* L. ssp. *moravica* (Zengerl) A.Löve – pebbly seashore, Idaotsa, Aksi Island, N Estonia 59°36'29" N 025°04'55" E 21.08.2008 JE
- 1034 *Sorbus intermedia* (Ehrh.) Pers. – roadside, Hänga, Saaremaa Island, W Estonia 57°57'32" N 022°03'54" E 04.10.2007 J E

Rubiaceae

- 1035 *Galium mollugo* L. – dry alvar grassland (*Trifolium montani*–*Filipenduletum vulgaris*), Jõelähtme, Harju county, N Estonia 59°26'13" N 025°08'41" E 22.08.2007 MR
- 1036 *Galium spurium* L. – dry boreal *Vaccinium vitis-idaea* oak–pine (*Quercus robur*–*Pinus sylvestris*) forest (*Vaccinio vitis-idaeo*–*Quercus*–*Pinetum*), Kloostrimetsa, Tallinn, N Estonia 59°28'11" N 024°53'02" E 17.09.2007 MR
- 1037 *Galium verum* L. – dry boreal grassland (*Deschampsietum flexuosae*), Kloostrimetsa, Tallinn, N Estonia 59°28'13" N 024°52'50" E 18.09.2007 MR

Salicaceae

- 1038 *Salix pentandra* L. – roadside, Männiku, Tallinn, N Estonia 59°22'08" N 024°42'30" E 02.08.2007 MR

Scrophulariaceae

- 1039 *Linaria vulgaris* Mill. – dry alvar grassland (*Trifolio montani–Filipenduletum vulgaris*), Türisalu, Harju county, NW Estonia 59°25'14" N 024°19'48" E 08.10.2008 MR
- 1040 *Rhinanthus minor* L. – roadside, Hiiu, Tallinn, N Estonia 59°22'10" N 024°41'38" E 02.08.2007 MR
- 1041 *Scrophularia nodosa* L. – dry alvar grassland (*Trifolio montani–Filipenduletum vulgaris*), Jõelähtme, Harju county, N Estonia 59°26'13" N 025°08'41" E 22.08.2007 MR
- 1042 *Verbascum nigrum* L. – dry alvar grassland (*Trifolio montani–Filipenduletum vulgaris*), Lubja, Harju county, N Estonia 59°30'55" N 024° 50'24" E 10.11.2007 OA
- 1043 *Verbascum nigrum* L. – floodplain alder (*Alnus incana*) forest (*Humulo–Alnetum incanae*), Kloostrimetsa, Tallinn, N Estonia 59°28'02" N 024°52'33" E 27.08.2007 MR
- 1044 *Verbascum nigrum* L. – dry alvar grassland (*Trifolio montani–Filipenduletum vulgaris*) with *Juniperus communis* and *Pinus sylvestris*, Türisalu, Harju county, NW Estonia 59°25'03" N 024°18'59" E 26.09.2007 MR
- 1045 *Veronica longifolia* L. – dry alvar grassland (*Trifolio montani–Filipenduletum vulgaris*) with *Juniperus communis*, Türisalu, Harju county, NW Estonia 59°24'42" N 024°20'28" E 26.09.2007 MR, NA
- 1046 *Veronica longifolia* L. – dry alvar grassland (*Trifolio montani–Filipenduletum vulgaris*), Jõelähtme, Harju county, N Estonia 59°26'17" N 025°08'50" E 22.08.2007 HR, MR

Solanaceae

- 1047 *Hyoscyamus niger* L. – roadside, Rae, Harju county, N Estonia 59°22' 50" N 024°53'44" E 13.12.2007 OA
- 1048 *Solanum dulcamara* L. – waste land, Uuslinn, Tallinn, N Estonia 59°25'55" N 024°48'21" E 24.09.2007 MR, NA

Urticaceae

- 1049 *Urtica dioica* L. – arboretum, Kloostrimetsa, Tallinn, N Estonia 59°28'15" N 024°52'43" E 22.10.2008 MR
- 1050 *Urtica dioica* L. – streetside, Kloostrimetsa, Tallinn, N Estonia 59°28'02" N 024°52'16" E 18.09.2007 MR

Violaceae

- 1051 *Viola arvensis* Murray – wall of cemetery, Lääneotsa, Prangli Island, N Estonia 59°37'08" N 024°59'56" E 07.09.2007 MR

Monocotyledoneae**Alliaceae**

- 1052 *Allium oleraceum* L. – dry alvar grassland (*Trifolio montani–Filipenduletum vulgaris*), Naage, Harju county, NW Estonia 59°23'59" N 024° 23'08" E 25.07.2007 SJ

- 1053 *Allium oleraceum* L. – dry boreal grassland (*Festuco rubrae–Agrostietum capillaris*), Koitjärve, Harju county, N Estonia 59°24'29" N 025°36'17" E 10.08.2007 UL
- 1054 *Allium schoenoprasum* L. – dry alvar grassland (*Trifolio montani–Filipenduletum vulgaris*), Jõelähtme, Harju county, N Estonia 59°26'19" N 025°08'18" E 22.08.2007 TJ, MR

Convallariaceae

- 1055 *Convallaria majalis* L. – dry boreal *Vaccinium vitis-idaea* oak-pine (*Quercus robur–Pinus sylvestris*) forest (*Vaccinio vitis-idaeo–Quercu–Pinetum*), Kloostrimetsa, Tallinn, N Estonia 59°28'14" N 024°52'47" E 21.11.2007 MR
- 1056 *Convallaria majalis* L. – streetside, Kloostrimetsa, Tallinn, N Estonia 59°28'11" N 024°52'26" E 18.09.2007 MR
- 1057 *Convallaria majalis* L. – dry boreal *Vaccinium vitis-idaea* pine (*Pinus sylvestris*) forest (*Vaccinio vitis-idaeo–Pinetum*), Kloostrimetsa, Tallinn, N Estonia 59°28'01" N 024°52'15" E 11.09.2008 M R
- 1058 *Convallaria majalis* L. – dry boreal *Vaccinium vitis-idaea* pine (*Pinus sylvestris*) forest (*Vaccinio vitis-idaeo–Pinetum*), Vääna-Jõesuu, Harju county, N Estonia 59°25'30" N 024°20'39" E 26.09.2007 M R
- 1059 *Polygonatum odoratum* (Mill.) Druce – dry boreal grassland (*Festuco rubrae–Anthoxanthes*) Värskä, Põlva county, SO Estonia 57°56'40" N 027°39'05" E 21.09.2007 MR
- 1060 *Polygonatum odoratum* (Mill.) Druce – streetside, Kloostrimetsa, Tallinn, N Estonia 59°28'15" N 024°52'31" E 18.09.2007 M R

Cyperaceae

- 1061 *Eriophorum vaginatum* L. – transitional bog pine (*Pinus sylvestris*) forest, Koitjärve, Harju county, N Estonia 59°24'28" N 025°35'42" E 10.08.2007 UL

Juncaceae

- 1062 *Juncus alpinus* Vill. – sandpit, Piusa, Põlva county, SO Estonia 57°50'38" N 027°27'59" E 21.09.2007 MR, HV
- 1063 *Juncus arcticus* Willd. – roadside, Hiiu, Tallinn, N Estonia 59°22' 10" N 024°41'38" E 02.08.2007 OA, MR
- 1064 *Juncus effusus* L. – lakeside, Mähuste Lake, Koitjärve, Harju county, N Estonia 59°24'33" N 025°36'22" E 10.08.2007 MR
- 1065 *Juncus filiformis* L. – transitional bog pine (*Pinus sylvestris*) forest, Koitjärve, Harju county, N Estonia 59°24'30" N 025°35'41" E 10.08.2007 MR

Poaceae

- 1066 *Brachypodium sylvaticum* (Huds.) P.Beauv. – roadside, Ohtla, Lääne county, W Estonia 58°52'32" N 023°52'56" E 03.11.2007 U L
- 1067 *Calamagrostis arundinacea* (L.) Roth – dry alvar grassland (*Trifolio montani–Filipenduletum vulgaris*), Aandu, Rapla county, NW Estonia 59°09'35" N 024°45'09" E 10.09.2007 UL
- 1068 *Calamagrostis canescens* (Weber) Roth – lakeside, Mähuste Lake, Koitjärve, Harju county, N Estonia 59°24'33" N 025°36'22" E 10.08.2007 SJ

- 1069 *Dactylis glomerata* L. – poor paludified grassland (*Geranio palustris–Filipenduletum*), Kloostrimetsa, Tallinn, N Estonia 59°27'52" N 024°53'11" E 31.08.2007 MR
- 1070 *Dactylis glomerata* L. – dry boreal grassland (*Deschampsietum flexuosae*), Kloostrimetsa, Tallinn, N Estonia 59°28'13" N 024°52'50" E 27.07.2007 OA, MR
- 1071 *Deschampsia flexuosa* (L.) Trin. – lichen (*Cladina*) pine (*Pinus sylvestris*) forest (*Cladino–Pinetum*), Kelnase, Prangli Island, N Estonia 59°38'23" N 024°59'39" E 07.09.2007 MR
- 1072 *Deschampsia flexuosa* (L.) Trin. – burned lichen (*Cladina*) pine (*Pinus sylvestris*) forest (*Cladino–Pinetum*), Koitjärve, Harju county, N Estonia 59°24'33" N 025°36'36" E 10.08.2007 UL
- 1073 *Elymus caninus* (L.) L. – fresh alvar *Calamagrostis* spruce (*Picea abies*) forest (*Calamagrostio–Piceetum*), Aandu, Rapla county, NW Estonia 59°09'27" N 024°44'10" E 30.09.2007 UL
- 1074 *Elymus repens* (L.) Gould – abandoned field, Rootsi, Rapla county, NW Estonia 59°09'25" N 024°44'42" E 07.09.2007 UL
- 1075 *Festuca gigantea* (L.) Vill. – fresh alvar *Calamagrostis* spruce (*Picea abies*) forest (*Calamagrostio–Piceetum*), Aandu, Rapla county, NW Estonia 59°09'27" N 024°44'08" E 11.09.2007 UL
- 1076 *Festuca ovina* L. – dry boreal grassland (*Festuco rubrae–Agrostietum capillaris*), Koitjärve, Harju county, N Estonia 59°24'233" N 025°36'30" E 10.08.2007 UL
- 1077 *Festuca rubra* L. – dry boreal *Vaccinium vitis-idaea* oak-pine (*Quercus robur–Pinus sylvestris*) forest (*Vaccinio vitis-idaeo–Quercu–Pinetum*), Kloostrimetsa, Tallinn, N Estonia 59°28'14" N 024°52'45" E 27. 07.2007 MR
- 1078 *Koeleria glauca* (Schrad.) DC. – sandy plain (*Koelerio–Festucetum polesicae*), Koidula, Põlva county, SO Estonia 57°50'19" N 027°35'52" E 21.09.2007 OA
- 1079 *Melica nutans* L. – dry boreal *Vaccinium vitis-idaea* pine (*Pinus sylvestris*) forest (*Vaccinio vitis-idaeo–Pinetum*), Kloostrimetsa, Tallinn, N Estonia 59°28'16" N 024°52'37" E 10.08.2007 MR
- 1080 *Milium effusum* L. – fresh alvar *Calamagrostis* spruce (*Picea abies*) forest (*Calamagrostio–Piceetum*), Aandu, Rapla county, NW Estonia 59°09'27" N 024°44'08" E 26.09.2007 UL
- 1081 *Molinia caerulea* (L.) Moench – rich paludiefed grassland (*Scorzonero–Caricetum*), Rootsi, Rapla county, NW Estonia 59°09'26" N 024°43'55" E 07.10.2007 UL
- 1082 *Phleum phleoides* (L.) Karst. – dry alvar grassland (*Trifolio montani–Filipenduletum vulgaris*), Jõelähtme, Harju county, N Estonia 59°26'19" N 025°08'18" E 22.08.2007 UL, HR, MR
- 1083 *Poa angustifolia* L. – lakeside, Mähuste Lake, Koitjärve, Harju county, N Estonia 59°24'33" N 025°36'22" E 10.08.2007 UL, MR
- 1084 *Poa compressa* L. – roadside, Rootsi, Rapla county, NW Estonia 59°09'15" N 024°45'20" E 01.08.2007 UL
- 1085 *Poa crispa* Thuill. – Poolamäe Park, Juhkentali, Tallinn, N Estonia 59°25'34" N 024°45'36" E 02.07.2007 OA, SJ, MR, IMÄ, ES 2007

Trilliaceae

- 1086 *Paris quadrifolia* L. – arboretum, Kloostrimetsa, Tallinn, N Estonia 59°28'12" N 024°52'58" E 22.08.2008 JE
- 1087 *Paris quadrifolia* L. – dry boreal *Vaccinium vitis-idaea* oak-pine (*Quercus robur*–*Pinus sylvestris*) forest (*Vaccinio vitis-idaeo*–*Quercu*–*Pinetum*), Kloostrimetsa, Tallinn, N Estonia 59°28'11" N 024°53'02" E 31.08.2007 MR
- 1088 *Paris quadrifolia* L. – fresh alvar *Calamagrostis* pine (*Pinus sylvestris*) forest (*Calamagrostio*–*Pinetum*), Aandu, Rapla county, NW Estonia 59°09'42" N 024°44'56" E 01.08.2007 UL
- 1089 *Paris quadrifolia* L. – dry boreal *Vaccinium vitis-idaea* pine (*Pinus sylvestris*) forest (*Vaccinio vitis-idaeo*–*Pinetum*), Kloostrimetsa, Tallinn, N Estonia 59°28'10" N 024°52'57" E 30.07.2007 MR

Typhaceae

- 1090 *Typha latifolia* L. – pond, Idaotsa, Aksi Island, N Estonia 59°36'04" N 025°05'24" E 21.08.2008 JE

Seminum collectores: A. Kaur (AK), A. Rooneem (AR), A. Vammus (AV), E. Siibak (ES), H. Russak (HR), H. Viitmaa (HV), I. Mansu (IM), I. Mägar (IMÄ), I. Uuk (IU), J. Elliku (JE), K. Kirotar (KK), M. Raidma (MR), M. Seidelberg, (MS), N. Ausmees (NA), O. Abner (OA), R. Agurauja (RA), S. Janson (SJ), S. Järve (SJÄ), T. Jaanus (TJ), T. Niitla (TN), U. Laansoo (UL), V. Kuusmann (VK)

M. Kingisepp
Horti Director

O. Abner
Custos

EMHI Weather Records 2007 Tallinn - Harku

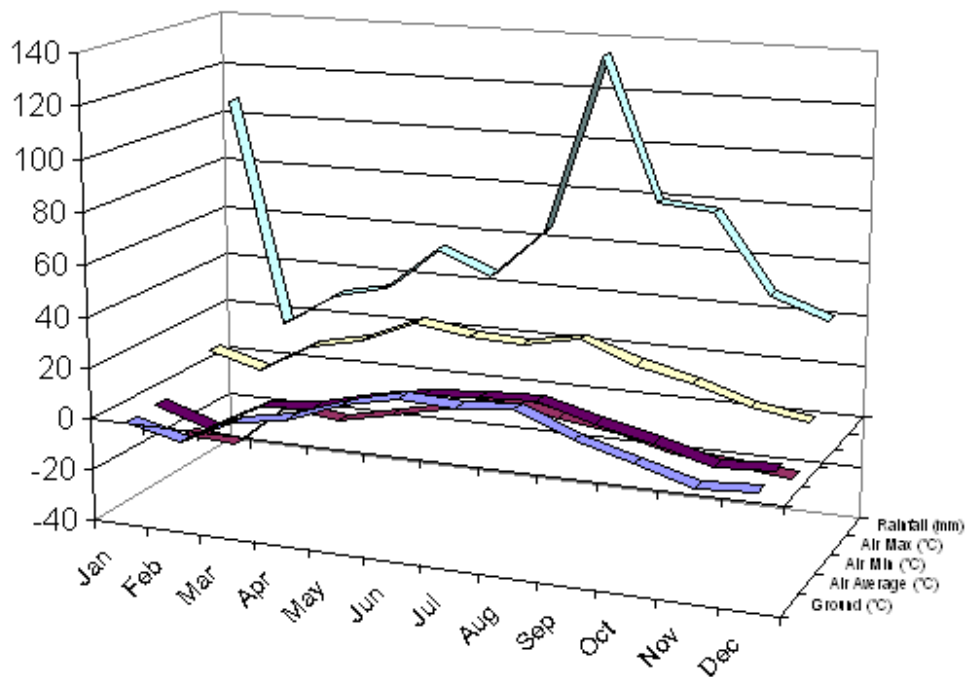
The highest air temperature: 29,7°C (August 11)

The lowest air temperature: -21,1°C (February 9)

Annual rainfall total: 735 mm

Average Monthly Temperature and Rainfall

Month	Ground (°C)	Air Average (°C)	Air Min (°C)	Air Max (°C)	Rainfall (mm)
Jan	-2	-0,9	-19,2	9,2	107
Feb	-7	-8,0	-21,1	3,3	17
Mar	3	3,0	-3,2	15,9	31
Apr	7	5,2	-5,8	20,4	36
May	15	11,0	-1,4	29,4	54
Jun	20	15,1	3,8	26,3	45
Jul	19	16,9	9,0	25,2	65
Aug	21	17,8	5,3	29,7	134
Sep	12	11,7	2,6	22,1	80
Oct	6	7,2	-3,6	17,1	78
Nov	0	1,1	-5,2	10,9	48
Dec	1	2,3	-7,5	7,0	40



EMHI Weather Records 2008 Tallinn - Harku

The highest air temperature: 25,9°C (August 1)

The lowest air temperature: -12,8°C (January 5)

Annual rainfall total: 764 mm

Average Monthly Temperature and Rainfall

Month	Ground (°C)	Air Average (°C)	Air Min (°C)	Air Max (°C)	Rainfall (mm)
Jan	-2	-0,5	-12,8	5,4	80
Feb	0	1,3	-6	6,7	51
Mar	0	0,7	-6,8	14,5	66
Apr	8	6,4	-3,2	22,8	32
May	16	10,2	-1,1	23,4	14
Jun	19	14,3	4	24,1	62
Jul	22	16,7	5,7	24,6	62
Aug	16	15,4	7,3	25,9	126
Sep	11	10,5	2	19,2	59
Oct	8	8,9	2,5	13,6	85
Nov	2	3,1	-7,6	10,5	89
Dec	0	0,4	-7,1	6,1	38

